

16 October 2013

CAIRNGORM MOUNTAIN LTD
CAIRNGORM SKI AREA
AVIEMORE

PH22 1RB

MacColl House
Woodrow
Eurocentral
Glasgow
ML1 4YQ

Electrical Installation Condition Report
Ref: 834896/952677/1

Tel: 01698 731525
Fax: 01698 731568

Dear Sir / Madam

LOCATION - Cairngorm Ski Area, Aviemore

Please find enclosed the recently completed Electrical Installation Condition Report for the Electrical Installation detailed above. The report has been compiled in accordance with BS7671 (as amended), The Institution of Engineering and Technology (IET) Requirements for Electrical Installations including IET Guidance Note Three, Inspection and Testing.

The Report is presented in the following format:

Section 1	Electrical Installation Condition Report Summary
Section 2	Installation Details
Section 3	Schedule of Items Requiring Inspection - Summary
Section 4	Observations and Recommendations for Action to be taken
Section 5	Index of Equipment Reports
Section 6	Equipment Reports

Electrical installations are required to be Inspected and Tested at regular intervals due to wear and tear and external influences such as vermin damage and general deterioration.

It is recommended that the Installation is further Inspected and Tested on the "next due" date indicated in Section 1, providing any defects identified in Section 4 have been dealt with in line with the recommendations made in this Condition Report.

I trust this is satisfactory and if I can be of any further assistance please do not hesitate to contact me.

Yours faithfully

Inspection and Test Manager

SSE Contracting Limited is part of the SSE Group
The Registered Office of SSE Contracting Limited is 55 Vastern Road Reading Berkshire RG1 8BU
Registered in England and Wales No. 02317133
www.ssecontracting.com

Electrical Installation Condition Report Summary

Client Details

Client Address	CAIRNGORM MOUNTAIN LTD CAIRNGORM SKI AREA AVIEMORE
Post Code	PH22 1RB

Installation Tested Report Number 834896/952677/1

Occupier Address	CAIRNGORM MOUNTAIN LTD Cairngorm Ski Area Aviemore
Post Code	PH22 1RB
Area Tested	As Above

Purpose of Report

To assess the condition of the electrical installation

Condition Report Defect Summary

Unsatisfactory	Remedial work required
Code 1 (C1)	0 Danger present. Risk of injury. Immediate remedial action required.
Code 2 (C2)	5 Potentially dangerous - urgent remedial action required.
Code 3 (C3)	31 Improvement recommended
Further Investigation	Any defects requiring Further Investigation will be suffixed by "F" i.e. "C2F" in the "Observations and Recommendations for Action" Section 4 of this Report.
No Code Note	General Observations concerning the installation In order to attain a "Satisfactory" result there must be no C1 or C2 Defects present.

Inspection and Test Date and Next Due Date

Test Date	08-Apr-13	Retest Period	5 years	Next due	08-Apr-18
<p>The "Next due" date above applies provided all C1 Defects are remedied immediately. In addition, any C2 Defects are to be remedied and/or investigated as a matter of urgency. Any Defects identified as requiring "Further investigation" should also be remedied and/or investigated as a matter of urgency.</p>					

Electrical Installation Condition Report compiled by

Inspection Engineer	[REDACTED]	Depot	Perth	Date	08-Apr-13
Reviewed by	[REDACTED]	Signed		Date	22-May-13
NICEIC Reg No	000500 - 150	Phone	[REDACTED]	Fax	[REDACTED]
Position	Inspection and Test Manager				
Company	SSE Contracting				
Address	MacColl House Woodrow Eurocentral Glasgow ML1 4YQ				

Electrical Installation Condition Report Summary (continued)

Extent and Limitations

Extent:

The extent of the Installation Inspected and Tested is defined on the previous page in the "Installation Tested" section. If the Inspection and Test does not extend to the entire electrical installation at that location, the "Area Tested" defines the area(s) that have been tested. The extent of any sampling applied to the Inspection and Test can be found in the Scope of Works or Specification provided at the Quotation/Tender stage and/or as agreed with the Client and subject to the Client making the Inspector aware of all parts of the Installation to be tested.

Limitations:

All "Hazardous Area" installations (potentially explosive atmospheres) are excluded from this report. Access to the equipment above 3m has not been included in line with BS7671 unless specifically stated within the agreed Specification. Any other Limitations imposed during the Inspection and Test, specific to parts of the Installation, will be identified in the "Observations and Recommendations for Action" Section 4 of this Condition Report.

The following Limitations have been applied to the Condition Report overall.

- 1 This Inspection and Test has been carried out in accordance with BS7671 as amended. Cables concealed within Trunking and Conduits, or Cables and Conduits concealed under floors, in inaccessible roof spaces and generally within the fabric of the Building have not been inspected.
- 2 The insulation resistance between line conductors was not carried out for some final circuits as it could not be guaranteed that all equipment was removed from circuit.
- 3 It has not been possible to carry out insulation tests due to the sensitivity of some of the electronic control gear in ci

Engineers Comments

Not Applicable

This Condition Report comprises the following:

- Section 1 Electrical Installation Condition Report Summary
- Section 2 Installation details
- Section 3 Schedule of Items Requiring Inspection - Summary
- Section 4 Observations and Recommendations of Action to be Taken
- Section 5 Index of Equipment Reports
- Section 6 24 Equipment Reports - Circuit Details and Test Results [1] to [24]

Note: This report must be read in its entirety and sections should not be read in isolation

Occupier **CAIRNGORM MOUNTAIN LTD**
 Installation Address **Cairngorm Ski Area, Aviemore**
 Specific Location **Not Applicable**

Installation History

Nature of Installation	Catering, Offices & Ski Hire
Estimated age of the original installation	30 years
Evidence of alterations/additions	Yes but date unknown
Date of previous inspection	Feb-2010
Previous records held by	SSE/Peter Bennett
Previous Report Ref. Number	925840/1

Supply Characteristics

Type of Electrical System	TN-C-S (Protective Multiple Earthing)
Number and type of live conductors	3 Phase 4 Wire (3 Phase & Neutral)
Nominal Voltage (U) and Frequency (f)	400 - 420 Volts 50 Hz
Maximum Demand	Unknown
External Earth Fault Loop Impedance (Ze)	0.01 Ohm with Bonding connected
PFC (value doubled if 3 phase)	19.9 kA (value obtained from ELI Tester)
Number of alternative supplies	1
Supply 2	Generator
Supply 3	
External Earth Fault Loop Impedance (Ze)	Unknown
Polarity at Origin	Satisfactory
Phase Rotation at the Origin	Not Verified

Primary Supply Overcurrent Device(s)

BS (EN)	Unknown
Type	Unknown
Nominal current rating	Unknown
Short-circuit capacity	Unknown

Earth Electrode Details

Type	Not Applicable
Location	
Resistance	
Method of Measurement	

Main Switch or Circuit Breaker

Type BS (EN)	Unknown
Number of poles	4
Supply conductor material	Copper
Supply conductor size	Unknown
Voltage and Current rating	415 Volts 800 Amps

Protection against Indirect Contact

Method of Protection	A.D.S.
----------------------	--------

Main RCD Details

RCD	Voltage	Current Rating (A)	Operating Current (mA)	x1 Test (ms)	Rated Time Delay
1		Not Applicable			
2					

Earthing and Bonding Arrangements

	Required	CSA mm2	Material	Satisfactory	Location of Connection
Main Earthing Conductor	Yes	35	Copper	Yes	Main Panel
Water Service	Yes	25	Copper	Yes	Stop Cock
Gas Service	Yes	25	Copper	Yes	Gas Main

Schedule of Items Requiring Inspection - Summary

Section 3

Occupier **CAIRNGORM MOUNTAIN LTD**
 Installation Address **Cairngorm Ski Area, Aviemore**
 Specific Location **Not Applicable**

Status Code Key

Acceptable Condition	No Defect noted	Meets the requirements of BS7671 (as ammended).
Unacceptable Condition	Code 1 (C1)	Danger present. Risk of injury. Immediate remedial action required.
Unacceptable Condition	Code 2 (C2)	Potentially dangerous - urgent remedial action required.
Improvement Recommended	Code 3 (C3)	Improvement recommended.
Further Investigation		Defect Codes C2 or C3 may be followed by "F". This indicates that further investigation is required to establish the exact nature of the defect i.e. "C2F".
Limitations	Code L (CL)	Limitations imposed and therefore Item has not been Inspected and or Tested.
Not Applicable		Section does not apply to the Installation Inspected and or Tested.

For full details of any Defects identified please refer to Section 4 of this Condition Report

Schedule of Items Requiring Inspection - Summary

Status

Energy Suppliers Electrical Intake Equipment	Acceptable Condition
Presence of Adequate Arrangements for Parallel or Switched Alternative Sources	Acceptable Condition
Automatic Disconnection of Supply (ADS)	Acceptable Condition
Other Methods of Protection	Not Applicable
Distribution Equipment	Improvement Recommended C3
Distribution Circuits	Acceptable Condition
Final Circuits	Unacceptable Condition C2
Isolation and Switching	Acceptable Condition
Current Using Equipment (Permanently Connected)	Acceptable Condition
Test Results	Unacceptable Condition C2
Special locations - Locations containing a Bath or Shower	Acceptable Condition
Special locations - Swimming Pools and Other Basins	Not Applicable
Special locations - Rooms and Cabins containing Sauna Heaters	Not Applicable
Special locations - Construction and Demolition Site Installations	Not Applicable
Special locations - Agricultural and Horticultural Installations	Not Applicable
Special locations - Conducting locations with restricted movement	Not Applicable
Special locations - Caravan / Camping Parks and similar Locations	Not Applicable
Special locations - Marinas and similar Locations	Not Applicable
Special locations - Medical Locations	Not Applicable
Special locations - Exhibition Shows and Stands	Not Applicable
Special locations - Solar Voltaic (PV) Power Supply Systems	Not Applicable
Special locations - Mobile or Transportable Units	Not Applicable
Special locations - Caravans and Motor Caravans	Not Applicable
Special locations - Operating and Maintainance Gangways	Not Applicable
Special locations - Amusement Devices, Parks, Fairgrounds and Circuses	Not Applicable
Special locations - Floor and Ceiling Heating Systems.	Not Applicable

Occupier **CAIRNGORM MOUNTAIN LTD**
 Installation Address **Cairngorm Ski Area, Aviemore**
 Specific Location **Not Applicable**

Defect Code Key

Unacceptable Condition	Code 1 (C1)	Danger present. Risk of injury. Immediate remedial action required.
Unacceptable Condition	Code 2 (C2)	Potentially dangerous - urgent remedial action required.
Improvement Recommended	Code 3 (C3)	Improvement recommended.
Further Investigation		Defect Codes C2 or C3 may be followed by "F". This indicates that further investigation is required to establish the exact nature of the defect i.e. "C2F".
Limitations	Code L (CL)	Limitations imposed and therefore Item has not been Inspected and or Tested.
No Code		General Observations made by the Inspector regarding the Installation.
For full details of any Defects identified please refer to Section 4 of this Condition Report		

Item	Code	Description	Fixed
------	------	-------------	-------

General Deviations

1	3	Socket outlets for use by Ordinary Persons are not protected by a 30mA RCD.	
---	---	---	--

[1] Main Supply 1

2		No design date for MCBs.	
---	--	--------------------------	--

[2] Main Supply 2

3		No design date for MCBs.	
4		This panel is for generator back up supplies only.	
5	L	The following areas were excluded from the Inspection and Test as agreed with: Unable to remove panel cover.	

[3] DB

6		No power at time of test.	
---	--	---------------------------	--

[4] Snowsports DB

7	3	The Provision of diagrams, charts or schedules at or near equipment is inadequate. No circuit chart.	
---	---	--	--

[5] Car Park T Bar Hot Main Switch

8	L	The following areas were excluded from the Inspection and Test as agreed with: Not possible to isolate as tows were in use.	
---	---	---	--

[7] DB K

9	3 F	Due to the way in which the ring circuit conductors were connected within the distribution board it was not possible to test the ring continuity of some conductors. Circuits 7L1 & 7L2.	
10	3	Final circuit cable conductors are not correctly colour coded. Black phase & neutral conductors.	
11	3	There is no notice warning of mixed wiring colours to two versions of BS7671 (as amended).	
12	3	Socket outlets for use by Ordinary Persons are not protected by a 30mA RCD.	
13	3	Final circuit cable conductors are not correctly colour coded. Phase conductors, circuits 1L123, 2L123, 5L123 & 6L123.	

[8] DB 1

Occupier CAIRNGORM MOUNTAIN LTD
Installation Address Cairngorm Ski Area, Aviemore
Specific Location Not Applicable

Item	Code	Description	Fixed
14		Circuit 11L2 isolated at time of test.	
15	2	The protective device for the final circuit cable does not appear to be appropriate. Circuit 1L3.	
16	2	Earth Loop Impedance Values were unsatisfactory. Circuit 6L2.	
17	3 F	Due to the way in which the ring circuit conductors were connected within the distribution board it was not possible to test the ring continuity of some conductors. Circuits 1L1, 5L2, 6L2, 6L3, 11L3, 12L1, 12L2 & 12L3.	
18	3	There is no notice warning of mixed wiring colours to two versions of BS7671 (as amended).	
[9] DB A1C			
19	3	The MCBs installed were made to BS3871 prior to its re-release in 1974 for which we are unable to find the necessary design data. Due to this we cannot confirm they will meet the required disconnection times.	
20	3 F	Due to the way in which the ring circuit conductors were connected within the distribution board it was not possible to test the ring continuity of some conductors. Circuits 1L1, 1L3, 3L1 & 4L1.	
[10] DB A1D			
21	3	The MCBs installed were made to BS3871 prior to its re-release in 1974 for which we are unable to find the necessary design data. Due to this we cannot confirm they will meet the required disconnection times.	
[11] DB 1			
22		Unable to access DB due to kitchen equipment.	
[12] DB A1A			
23	3 F	Despite reasonable investigation, some final circuits could not be traced. Circuits 2L3 & 4L3.	
24	3	The MCBs installed were made to BS3871 prior to its re-release in 1974 for which we are unable to find the necessary design data. Due to this we cannot confirm they will meet the required disconnection times.	
[13] DB A1B			
25		The equipment enclosure or internal barrier is unsatisfactory making access to live parts possible. Blanks missing, fitted at time of test.	Yes
26	3	The MCBs installed were made to BS3871 prior to its re-release in 1974 for which we are unable to find the necessary design data. Due to this we cannot confirm they will meet the required disconnection times.	
27	3 F	Despite reasonable investigation, some final circuits could not be traced. Circuits 3L2 & 3L3.	
[14] Shop Sub Board			
28	3 F	Due to the way in which the ring circuit conductors were connected within the distribution board it was not possible to test the ring continuity of some conductors.	
[15] Bar DB 3			
29	2	The protective device for the final circuit cable does not appear to be appropriate. Circuit 4L1.	

Occupier CAIRNGORM MOUNTAIN LTD
Installation Address Cairngorm Ski Area, Aviemore
Specific Location Not Applicable

Item	Code	Description	Fixed
30	3 F	Due to the way in which the ring circuit conductors were connected within the distribution board it was not possible to test the ring continuity of some conductors.	
31	3	The MCBs installed were made to BS3871 prior to its re-release in 1974 for which we are unable to find the necessary design data. Due to this we cannot confirm they will meet the required disconnection times.	
32	3	The Provision of diagrams, charts or schedules at or near equipment is inadequate. No circuit chart.	

[16] DB A2

33 No design date for MCB.

[17] Bar DB 1

34 3 The MCBs installed were made to BS3871 prior to its re-release in 1974 for which we are unable to find the necessary design data. Due to this we cannot confirm they will meet the required disconnection times.

[18] Bar DB 2

35 3 The MCBs installed were made to BS3871 prior to its re-release in 1974 for which we are unable to find the necessary design data. Due to this we cannot confirm they will meet the required disconnection times.

[19] DB A 3C

36 2 The protective device for the final circuit cable does not appear to be appropriate. Circuit 4L2.

37 3 F Despite reasonable investigation, some final circuits could not be traced. Circuit 2L123.

38 3 The MCBs installed were made to BS3871 prior to its re-release in 1974 for which we are unable to find the necessary design data. Due to this we cannot confirm they will meet the required disconnection times.

39 3 F Due to the way in which the ring circuit conductors were connected within the distribution board it was not possible to test the ring continuity of some conductors. Circuits 1L1, 1L2, 1L3, 3L1, 3L2, 3L3 & 4L1.

[20] DB A3

40 No design details available for isolator.

41 2 The protective device for the final circuit cable does not appear to be appropriate. Circuit 1L123.

[21] DB A3A

42 The equipment enclosure or internal barrier is unsatisfactory making access to live parts possible. Blank missing, fitted at time of test. Yes

43 3 F Despite reasonable investigation, some final circuits could not be traced. Circuit 2L3.

44 3 The MCBs installed were made to BS3871 prior to its re-release in 1974 for which we are unable to find the necessary design data. Due to this we cannot confirm they will meet the required disconnection times.

[22] DB A3B

Occupier CAIRNGORM MOUNTAIN LTD
Installation Address Cairngorm Ski Area, Aviemore
Specific Location Not Applicable

Item	Code	Description	Fixed
45	3	The MCBs installed were made to BS3871 prior to its re-release in 1974 for which we are unable to find the necessary design data. Due to this we cannot confirm they will meet the required disconnection times.	
46	3 F	Despite reasonable investigation, some final circuits could not be traced. Circuits 2L2, 3L1 & 3L2.	

[24] Kitchen Gen Power

47		The equipment enclosure or internal barrier is unsatisfactory making access to live parts possible. Blank plates missing from spare ways in DB - fitted at time of test.	Yes
48	3	There is no notice warning of mixed wiring colours to two versions of BS7671 (as amended).	
49	3 F	Due to the way in which the ring circuit conductors were connected within the distribution board it was not possible to test the ring continuity of some conductors. Circuits 5L2 & 5L3.	

Index of Equipment Reports

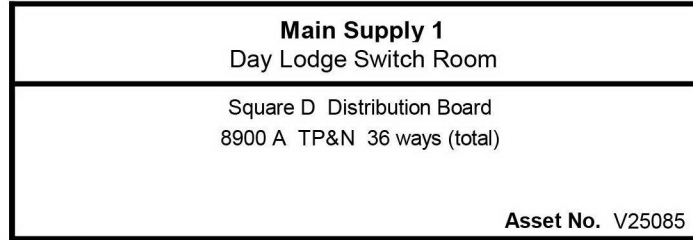
Section 5

Occupier **CAIRNGORM MOUNTAIN LTD**
 Installation Address **Cairngorm Ski Area, Aviemore**
 Specific Location **Not Applicable**

Report No	Asset No.	Name	Location	Fed from
[1]	V25085	Main Supply 1	Day Lodge Switch Room	Origin of Supply
[2]	V25084	Main Supply 2	Day Lodge Switch Room	Origin of Supply
[3]	V25086	DB	Day Lodge Switch Room	[1] Main Supply 1
[4]	V25083	Snowsports DB	Disability Snow Sports Area	[1] Main Supply 1
[5]	V23510	Car Park T Bar Hot Main Switch	Car Park T Bar Hut	[1] Main Supply 1
[6]	V23511	DB 1	Car Park Hut	[5] Car Park T Bar Hot Main Switch via Isolator
[7]	V25082	DB K	Casbar Kitchen	[1] Main Supply 1
[8]	V25041	DB 1	Ski Hire 2nd Floor	[1] Main Supply 1
[9]	V25074	DB A1C	Casbar Kitchen	[1] Main Supply 1
[10]	V25075	DB A1D	Casbar Kitchen	[9] LiveSide DB A1C
[11]	V25071	DB 1	Casbar Kitchen	[9] DB A1C
[12]	V25072	DB A1A	Casbar Kitchen	[11] DB 1 via Contactor
[13]	V25073	DB A1B	Casbar Kitchen	[9] DB A1C
[14]	V25081	Shop Sub Board	Casbar	[9] DB A1C
[15]	V25056	Bar DB 3	T Bar Switch Cupboard	[1] Main Supply 1
[16]	V25053	DB A2	T Bar Switch Cupboard	[15] Bar DB 3
[17]	V25054	Bar DB 1	T Bar Switch Cupboard	[16] DB A2 via Contactor
[18]	V25055	Bar DB 2	T Bar Switch Cupboard	[15] Bar DB 3
[19]	V25044	DB A 3C	Ski Hire 2nd Floor	[1] Main Supply 1
[20]	V25045	DB A3	Ski Hire 2nd Floor	[1] Main Supply 1
[21]	V25042	DB A3A	Ski Hire 2nd Floor	[20] DB A3 via Contactor
[22]	V25043	DB A3B	Ski Hire 2nd Floor	[20] DB A3 via Contactor
[23]	V25051	Kitchen Servery Main Switch	T Bar Switch Cupboard	Not Determined
[24]	V25052	Kitchen Gen Power	T Bar Switch Cupboard	[23] Kitchen Servery Main Switch

Occupier **CAIRNGORM MOUNTAIN LTD**
 Installation Address **Cairngorm Ski Area, Aviemore**
 Specific Location **Not Applicable**

Supply Cables
 Length 1 metre
 SWA



Earthing Arrangements
 PFC 19.9 kA
 Earth Loop 0.01 Ohms
 Cable Sheath

Supplied From Origin of Supply
 Secondary Supply None

Circuit Schedule and Test Results

CIRCUIT		Cable		Overcurrent Device		Dis Time	Continuity Test			Insulation Test		Earth Loop	R.C.D. Test		
No	Designation	Points Served	Wiring Phase	Method CPC	BS No Rating	Type Rating	s	r1 rn	r2	R1+R2 R2	L/L L/E	L/N N/E	Max Z s Zs	R.C.D. Rating	x1 x5
Ø		Polarity	mm ²	mm ²	A	kA		Ω	Ω	Ω	MΩ	MΩ	Ω	mA	ms
1	Ext Lighting - V25086	1	S	B	1571	1	5	-	-	L	-	299	L	-	-
L1		P	10	6	15	L		-	-	-	299	299	L	-	-
1	Up Hill Ski Club - V25083	1	SWA	B	1571	1	5	-	-	0.10	-	299	L	-	-
L2		P	10	CS	40	L		-	-	-	299	299	0.11	-	-
1	Spare	-	-	-	-	-	-	-	-	-	-	-	-	-	-
L3		-	-	-	-	-	-	-	-	-	-	-	-	-	-
2	Hoist No 1	1	L	L	1571	1	0.4	-	-	L	L	299	L	-	-
L123		L	L	L	15	L		-	-	-	299	299	L	-	-
3	New Bottom Station	1	L	L	1571	1	5	-	-	L	L	299	L	-	-
L123		L	L	L	200	L		-	-	-	299	299	L	-	-
4	Gen Control Panel Changeover	1	L	L	1571	1	5	-	-	L	L	299	L	-	-
L123		L	L	L	80	L		-	-	-	299	299	L	-	-
5	Bottom Station	1	L	L	1571	1	5	-	-	L	L	299	L	-	-
L123		L	L	L	200	L		-	-	-	299	299	L	-	-
6	Kitchen Equipment	1	L	L	1571	1	5	-	-	L	299	299	L	-	-
L123		P	L	L	30	L		-	-	-	299	299	L	-	-
7	Day Lodge Tows - V23510	1	SWA	B	1571	1	5	-	-	L	L	L	L	-	-
L123		L	35	CS	125	L		-	-	-	L	L	L	-	-
8	Level 1 Kitchen DB - V25082	1	SWA	B	60947	2	5	-	-	0.04	299	299	L	-	-
L123		P	25	CS	100	25		-	-	-	299	299	0.05	-	-
9	Level 1 & 2 Supply - V25041	1	SWA	B	60947	2	5	-	-	0.10	299	299	L	-	-
L123		P	16	CS	63	25		-	-	-	299	299	0.11	-	-
10	DB A1 - V25041	1	SWA	B	1571	1	5	-	-	0.06	299	299	L	-	-
L123		P	16	CS	60	L		-	-	-	299	299	0.07	-	-
11	DB A2 - V25056	1	SWA	B	1571	1	5	-	-	0.08	299	299	L	-	-
L123		P	10	CS	60	L		-	-	-	299	299	0.09	-	-
12	DB A3 - V25044	1	SWA	B	1571	1	5	-	-	0.08	299	299	L	-	-
L123		P	6	CS	60	L		-	-	-	299	299	0.09	-	-

Occupier **CAIRNGORM MOUNTAIN LTD**
 Installation Address **Cairngorm Ski Area, Aviemore**
 Specific Location **Not Applicable**

Circuit Schedule and Test Results

CIRCUIT			Cable		Overcurrent Device		Dis Time	Continuity Test			Insulation Test		Earth Loop	R.C.D. Test	
No	Designation	Points Served	Wiring Phase	Method	BS No	Type		r1	r2	R1+R2	L/L	L/N	Max Z _s	R.C.D.	x1
Ø		Polarity	mm ²	CPC mm ²	Rating A	Rating kA	s	Ω	Ω	Ω	MΩ	MΩ	Ω	Rating mA	x5 ms

Tested By		Test Date	Instrument Type		Serial No	Instrument Type		Serial No
[REDACTED]		12/04/2013	Megger		SHC/IT15			

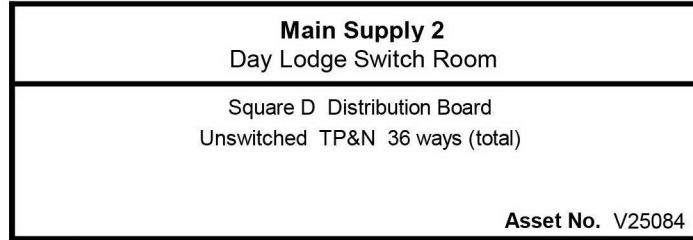
Equipment Report

Section 6 [2]

Occupier **CAIRNGORM MOUNTAIN LTD**
 Installation Address **Cairngorm Ski Area, Aviemore**
 Specific Location **Not Applicable**

Supply Cables

Length 10 metres
SWA



Earthing Arrangements

PFC 19.9 kA
 Earth Loop 0.01 Ohms
 Cable Sheath

Supplied From Origin of Supply
 Secondary Supply Generator

Circuit Schedule and Test Results

CIRCUIT		Cable			Overcurrent Device		Dis Time	Continuity Test			Insulation Test		Earth Loop	R.C.D. Test	
No	Designation	Points Served	Wiring Phase	Method CPC	BS No Rating	Type Rating	s	r1 rn	r2	R1+R2 R2	L/L L/E	L/N N/E	Max Z s Zs	R.C.D. Rating	x1 x5
Ø		Polarity	mm ²	mm ²	A	kA		Ω	Ω	Ω	MΩ	MΩ	Ω	mA	ms
1	Spare	-	-	-	-	-	-	-	-	-	-	-	-	-	-
L123		-	-	-	-	-	-	-	-	-	-	-	-	-	-
2	Spare	-	-	-	-	-	-	-	-	-	-	-	-	-	-
L123		-	-	-	-	-	-	-	-	-	-	-	-	-	-
3	Cold Room	1	L	L	1571	1	0.4	-	-	L	L	L	L	-	-
L123		L	L	L	15	10		-	-	-	L	L	L	-	-
4	Fire Hose Pump	1	L	L	1571	1	0.4	-	-	L	L	L	L	-	-
L123		L	L	L	15	10		-	-	-	L	L	L	-	-
5	Pump Station	1	L	L	60947	2	5	-	-	L	L	L	L	-	-
L123		L	L	L	100	25		-	-	-	L	L	L	-	-
6	Incoming Supply From Generator	1	L	L	1571	1	5	-	-	L	L	L	L	-	-
L123		L	L	L	100	25		-	-	-	L	L	L	-	-
7	Gents WC Sub Board	1	L	L	60947	2	5	-	-	L	-	L	L	-	-
L1		L	L	L	50	10		-	-	-	L	L	L	-	-
7	Fire Alarm	1	L	L	1571	1	0.4	-	-	L	-	L	L	-	-
L2		L	L	L	15	10		-	-	-	L	L	L	-	-
7	Sockets - Cash Desk	1	L	L	1571	1	0.4	-	-	L	-	L	L	-	-
L3		L	L	L	30	10		-	-	-	L	L	L	-	-
8	Gen Fuel Pump Fuel Heater	1	L	L	1571	1	0.4	-	-	L	L	L	L	-	-
L123		L	L	L	15	10		-	-	-	L	L	L	-	-
9	DB A1/Gen	1	L	L	1571	1	0.4	-	-	L	L	L	L	-	-
L123		L	L	L	20	10		-	-	-	L	L	L	-	-
10	DB A2/Gen	1	L	L	1571	1	0.4	-	-	L	L	L	L	-	-
L123		L	L	L	20	10		-	-	-	L	L	L	-	-
11	DB A3/Gen	1	L	L	1571	1	0.4	-	-	L	L	L	L	-	-
L123		L	L	L	20	10		-	-	-	L	L	L	-	-
12	Mech Services Control Panel	1	L	L	1571	1	5	-	-	L	L	L	L	-	-
L123		L	L	L	40	10		-	-	-	L	L	L	-	-

Occupier **CAIRNGORM MOUNTAIN LTD**
 Installation Address **Cairngorm Ski Area, Aviemore**
 Specific Location **Not Applicable**

Circuit Schedule and Test Results

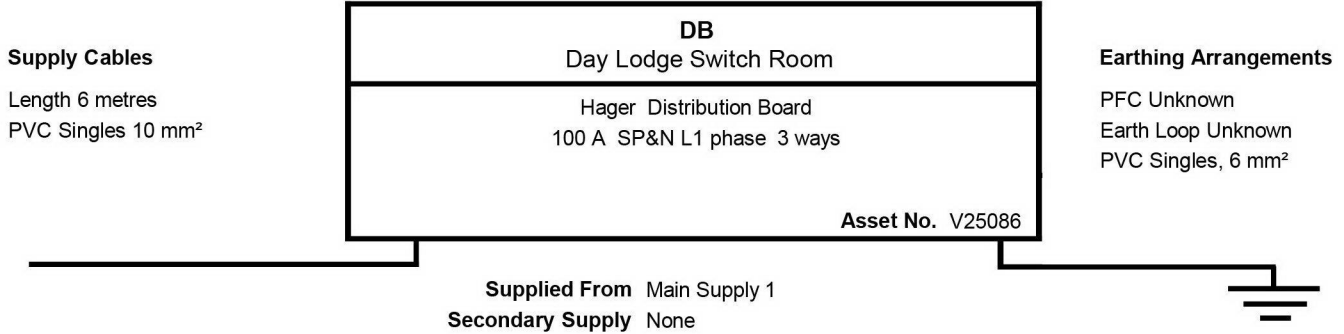
CIRCUIT			Cable		Overcurrent Device		Dis Time	Continuity Test			Insulation Test		Earth Loop	R.C.D. Test	
No	Designation	Points Served	Wiring Phase	Method	BS No	Type		r1	r2	R1+R2	L/L	L/N	Max Z _s	R.C.D.	x1
Ø		Polarity	mm ²	CPC mm ²	Rating A	Rating kA	s	Ω	Ω	Ω	MΩ	MΩ	Ω	Rating mA	x5 ms

Tested By		Test Date	Instrument Type		Serial No	Instrument Type		Serial No
[REDACTED]		11/04/2013	Megger		SHC/IT15			

Equipment Report

Section 6 [3]

Occupier **CAIRNGORM MOUNTAIN LTD**
 Installation Address **Cairngorm Ski Area, Aviemore**
 Specific Location **Not Applicable**

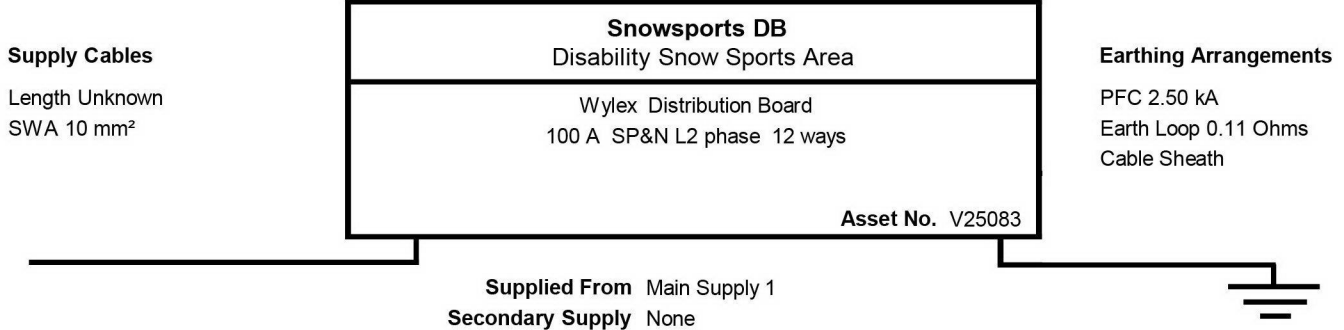


Circuit Schedule and Test Results

CIRCUIT		Cable		Overcurrent Device		Dis Time	Continuity Test			Insulation Test		Earth Loop	R.C.D. Test		
No	Designation	Points Served	Wiring Phase	Method	BS No		Type	r1	r2	R1+R2	L/L		L/N	Max Z s	R.C.D.
Ø		Polarity	mm ²	CPC mm ²	Rating A	Rating kA	s	Ω	Ω	Ω	MΩ	MΩ	Ω	mA	ms
1	Corner Street Light	1	S	B	60898	B	0.4	-	-	L	-	L	3.68	-	-
L1		P	2.5	2.5	10	10		-	-	-	299	299	L	-	-
2	Stair Lighting Outside	4	S	B	60898	B	0.4	-	-	L	-	L	3.68	-	-
L1		P	2.5	2.5	10	10		-	-	-	299	299	L	-	-
3	Building Lighting Outside	6	S	B	60898	B	0.4	-	-	L	-	L	3.68	-	-
L1		P	2.5/2X1	2.5	10	10		-	-	-	299	299	L	-	-
0	Time Clock	-	-	-	-	-	-	-	-	-	-	-	-	-	-
		-	-	-	-	-	-	-	-	-	-	-	-	-	-
0	Contactors	-	-	-	-	-	-	-	-	-	-	-	-	-	-
		-	-	-	-	-	-	-	-	-	-	-	-	-	-

Tested By	Test Date	Instrument Type	Serial No	Instrument Type	Serial No
R MacDonald	10/04/2013	Megger	SHC/IT15		

Occupier CAIRNGORM MOUNTAIN LTD
Installation Address Cairngorm Ski Area, Aviemore
Specific Location Not Applicable



Circuit Schedule and Test Results

CIRCUIT		Cable		Overcurrent Device		Dis Time	Continuity Test			Insulation Test		Earth Loop	R.C.D. Test		
No	Designation	Points Served	Wiring	Method	BS No		Type	r1	r2	R1+R2	L/L		L/N	Max Z s	R.C.D.
Ø		Polarity	Phase	CPC	Rating	Rating	s	Ω	Ω	Ω	MΩ	MΩ	Zs	Rating	x5
			mm ²	mm ²	A	kA							Ω	mA	ms
1	45A DP Switch - Disabled WC	1	S	B	60898	B	0.4	-	-	0.03	-	299	1.15	-	-
L2		P	6	6	32	6		-	-	-	299	299	0.14	-	-
2	2 x 13A FCUs - By Office	2	S	B	60898	B	0.4	-	-	0.11	-	L	2.30	-	-
L2		P	2.5	2.5	16	6		-	-	-	299	299	0.22	-	-
3	Heaters	2	S	B	60898	B	0.4	-	-	0.12	-	L	2.30	-	-
L2		P	2.5	2.5	16	6		-	-	-	299	299	0.23	-	-
4	Heater - Disabled WC	1	S	B	60898	B	0.4	-	-	0.15	-	L	1.84	-	-
L2		P	2.5	2.5	20	6		-	-	-	299	299	0.26	-	-
5	Lights	11	S	B	60898	B	0.4	-	-	0.58	-	L	6.13	-	-
L2		P	1.5	1.5	6	6		-	-	-	299	299	0.69	-	-
6	Spare	-	-	-	-	-	-	-	-	-	-	-	-	-	-
L2		-	-	-	-	-	-	-	-	-	-	-	-	-	-
0	RCD	1	S	C	61009	B	5	-	-	0.01	-	299	1666	30	37.7
		P	10	MF	80	-		-	-	-	299	299	0.11	-	13.3
7	Sockets	6	S	B	60898	B	0.4	0.29	0.29	0.07	-	299	1666	-	-
L2		P	2X4	2X4	32	6		0.29	-	-	299	299	0.28	-	-
8	Spare	-	-	-	-	-	-	-	-	-	-	-	-	-	-
L2		-	-	-	-	-	-	-	-	-	-	-	-	-	-
9	Spare	-	-	-	-	-	-	-	-	-	-	-	-	-	-
L2		-	-	-	-	-	-	-	-	-	-	-	-	-	-
10	Spare	-	-	-	-	-	-	-	-	-	-	-	-	-	-
L2		-	-	-	-	-	-	-	-	-	-	-	-	-	-
11	Spare	-	-	-	-	-	-	-	-	-	-	-	-	-	-
L2		-	-	-	-	-	-	-	-	-	-	-	-	-	-
12	Spare	-	-	-	-	-	-	-	-	-	-	-	-	-	-
L2		-	-	-	-	-	-	-	-	-	-	-	-	-	-

Occupier **CAIRNGORM MOUNTAIN LTD**
 Installation Address **Cairngorm Ski Area, Aviemore**
 Specific Location **Not Applicable**

Circuit Schedule and Test Results

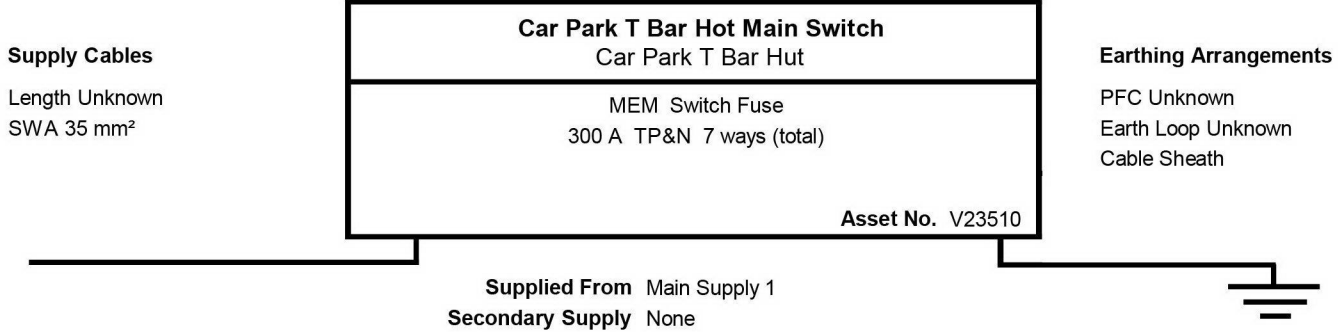
CIRCUIT			Cable		Overcurrent Device		Dis Time	Continuity Test			Insulation Test		Earth Loop	R.C.D. Test	
No	Designation	Points Served	Wiring Phase	Method	BS No	Type		r1	r2	R1+R2	L/L	L/N	Max Z s	R.C.D.	x1
Ø		Polarity	mm ²	CPC mm ²	Rating A	Rating kA	s	Ω	Ω	Ω	MΩ	MΩ	Ω	Rating mA	x5 ms

Tested By		Test Date	Instrument Type		Serial No	Instrument Type		Serial No
[REDACTED]		08/04/2013	Megger		SHC/IT15			

Equipment Report

Section 6 [5]

Occupier **CAIRNGORM MOUNTAIN LTD**
 Installation Address **Cairngorm Ski Area, Aviemore**
 Specific Location **Not Applicable**



Circuit Schedule and Test Results

CIRCUIT			Cable		Overcurrent Device		Dis Time	Continuity Test			Insulation Test		Earth Loop	R.C.D. Test	
No	Designation	Points Served	Wiring Phase	Method CPC	BS No Rating	Type Rating	s	r1 rn	r2	R1+R2 R2	L/L L/E	L/N N/E	Max Z s Zs	R.C.D. Rating	x1 x5
Ø		Polarity	mm ²	mm ²	A	kA		Ω	Ω	Ω	MΩ	MΩ	Ω	mA	ms
1	Car Park T-Bar	1	S	B	88	GG	L	-	-	L	-	L	L	-	-
L123		L	35	MF	L	80		-		-	L	L	L		
2	Fiacail Poma	1	S	B	88	GG	L	-	-	L	-	L	L	-	-
L123		L	35	MF	L	80		-		-	L	L	L		
3	Isolator - Car Park Hut & Fiacail Poma	1	S	B	88	GG	L	-	-	L	-	L	L	-	-
L1		P	16	MF	L	80		-		-	L	L	0.14		

Tested By	Test Date	Instrument Type	Serial No	Instrument Type	Serial No
C McDonald	10/04/2013	Megger	SHC/IT15		
R MacDonald					

Equipment Report

Section 6 [6]

Occupier **CAIRNGORM MOUNTAIN LTD**
 Installation Address **Cairngorm Ski Area, Aviemore**
 Specific Location **Not Applicable**

Supply Cables
 Length 6 metres
 SWA 16 mm²

DB 1 Car Park Hut
Hager Distribution Board RCD SP&N L1 phase 4 ways
RCD Details BS (EN) 61008 40 A 30 mA 2 pole
Test Results 1x 28 ms 5x 17 ms Asset No. V23511

Earthing Arrangements
 PFC 1.46 kA
 Earth Loop 0.14 Ohms
 Integral C.P.C., 16 mm²

Supplied From Car Park T Bar Hot Main Switch via Isolator
 Secondary Supply None

Circuit Schedule and Test Results

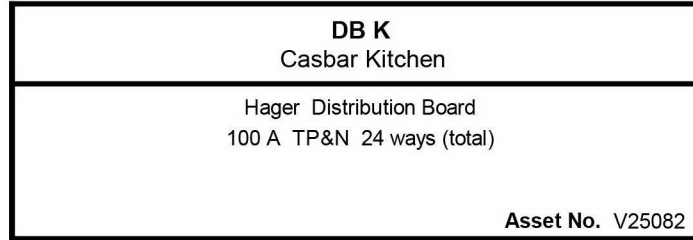
CIRCUIT			Cable		Overcurrent Device		Dis Time	Continuity Test			Insulation Test		Earth Loop	R.C.D. Test	
No	Designation	Points Served	Wiring Phase	Method CPC	BS No Rating	Type Rating	s	r1 rn	r2	R1+R2 R2	L/L L/E	L/N N/E	Max Z s Zs	R.C.D. Rating	x1 x5
Ø		Polarity	mm ²	mm ²	A	kA		Ω	Ω	Ω	MΩ	MΩ	Ω	mA	ms
1	Heater	1	SWA	B	60898	B	0.4	-	-	0.28	-	299	1666	-	-
L1		P	4	CS	20	6		-	-	-	299	299	0.42	-	-
2	Sockets	1	SWA	B	60898	B	0.4	-	-	0.24	-	299	1666	-	-
L1		P	4	CS	16	6		-	-	-	299	299	0.38	-	-
3	Sockets	2	SWA	B	60898	B	0.4	-	-	0.22	-	299	1666	-	-
L1		P	2X4	CS	16	6		-	-	-	299	299	0.36	-	-
4	Lights	1	S	B	60898	B	0.4	-	-	0.43	-	L	1666	-	-
L1		P	2.5	2.5	6	6		-	-	-	299	299	0.57	-	-

Tested By	Test Date	Instrument Type	Serial No	Instrument Type	Serial No
R MacDonald	09/04/2013	Megger	SHC/IT15		

Occupier **CAIRNGORM MOUNTAIN LTD**
 Installation Address **Cairngorm Ski Area, Aviemore**
 Specific Location **Not Applicable**

Supply Cables

Length 20 metres
 SWA 25 mm²



Earthing Arrangements

PFC 8.60 kA
 Earth Loop 0.05 Ohms
 Cable Sheath

Supplied From Main Supply 1
 Secondary Supply None

Circuit Schedule and Test Results

CIRCUIT			Cable		Overcurrent Device		Dis Time	Continuity Test			Insulation Test		Earth Loop	R.C.D. Test	
No	Designation	Points Served	Wiring	Method	BS No	Type		r1	r2	R1+R2	L/L	L/N		Max Z s	R.C.D.
Ø		Polarity	Phase	CPC	Rating	Rating	s	rn	Ω	R2	L/E	N/E	Zs	Rating	x5
			mm ²	mm ²	A	kA		Ω	Ω	Ω	MΩ	MΩ	Ω	mA	ms
1	Chip 1	1	*	B	60898	C	0.4	-	-	0.13	299	299	0.57	-	-
L123		P	4	4	32	10		-	-	-	299	299	0.18	-	-
2	Oven	1	*	B	60898	C	5	-	-	0.16	299	299	0.46	-	-
L123		P	4	4	40	10		-	-	-	299	299	0.21	-	-
3	Coffee 1	1	T+E	B	60898	B	0.4	-	-	0.11	-	L	1.15	-	-
L1		P	6	2.5	32	6		-	-	-	299	299	0.16	-	-
3	Radial - IT Socket	1	T+E	B	60898	B	0.4	-	-	0.27	-	299	1.84	-	-
L2		P	2.5	1.5	20	6		-	-	-	299	299	0.32	-	-
3	Coffee 2	1	T+E	B	60898	B	0.4	-	-	0.13	-	L	1.15	-	-
L3		P	6	2.5	32	6		-	-	-	299	299	0.18	-	-
4	Dish Washer	1	S	B	60898	B	0.4	-	-	0.15	-	299	1.15	-	-
L1		P	6	6	32	6		-	-	-	299	299	0.20	-	-
4	Track Lighting - Near Side	1	T+E	B	60898	D	0.4	-	-	0.46	-	L	0.57	-	-
L2		P	1.5	1	16	6		-	-	-	299	299	0.51	-	-
4	Track Lighting - Far Side	1	T+E	B	60898	B	0.4	-	-	0.59	-	L	3.68	-	-
L3		P	1.5	1	10	6		-	-	-	299	299	0.64	-	-
5	Chip 2	1	*	B	60898	C	0.4	-	-	0.11	299	299	0.57	-	-
L123		P	6	6	32	10		-	-	-	299	299	0.16	-	-
6	Hob	1	*	B	60898	C	0.4	-	-	0.10	299	299	0.57	-	-
L123		P	6	6	32	10		-	-	-	299	299	0.15	-	-
7	Ring Main - Bar sockets	12	T+E	B	60898	B	0.4	0.24	L	0.25	-	299	1.15	-	-
L1		P	2X2.5	2X1.5	32	6		L	-	-	299	299	0.30	-	-
7	Ring Main - Kitchen Sockets	6	T+E	B	60898	B	0.4	0.20	L	0.21	-	299	1.15	-	-
L2		P	2X2.5	2X1.5	32	6		L	-	-	299	299	0.26	-	-
7	Spare	-	-	-	-	-	-	-	-	-	-	-	-	-	-
L3		-	-	-	-	-	-	-	-	-	-	-	-	-	-
8	Bar Coolers	3	T+E	B	60898	B	0.4	-	-	0.13	-	299	1.15	-	-
L1		P	6	2.5	32	6		-	-	-	299	299	0.18	-	-

Occupier **CAIRNGORM MOUNTAIN LTD**
 Installation Address **Cairngorm Ski Area, Aviemore**
 Specific Location **Not Applicable**

Circuit Schedule and Test Results

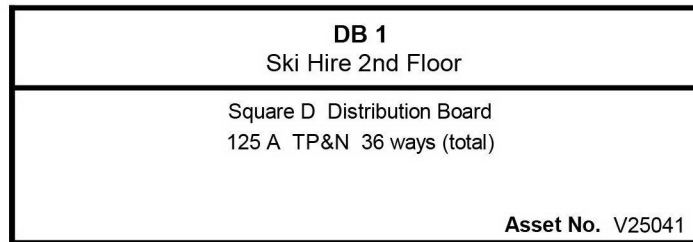
CIRCUIT			Cable		Overcurrent Device		Dis Time	Continuity Test			Insulation Test		Earth Loop	R.C.D. Test	
No	Designation	Points Served	Wiring Phase	Method CPC	BS No Rating A	Type Rating kA	s	r1 rn Ω	r2 Ω	R1+R2 R2 Ω	L/L L/E MΩ	L/N N/E MΩ	Max Z s Zs Ω	R.C.D. Rating mA	x1 x5 ms
8 L2	Wall Lights & Emergency Lights	5 P	T+E 2X1.5	B 2X1	60898 10	B 6	0.4	- -	-	0.46 -	- 299	L 299	3.68 0.51	-	-
8 L3	Lights - Bar	15 P	T+E 1.5	B 1	60898 10	B 6	0.4	- -	-	0.54 -	- 299	L 299	3.68 0.59	-	-
0	*HOFR FLEX	-	-	-	-	-	-	-	-	-	-	-	-	-	-

Tested By	Test Date	Instrument Type	Serial No	Instrument Type	Serial No
C McDonald	09/04/2013	Megger	SHC/IT15		

Occupier **CAIRNGORM MOUNTAIN LTD**
 Installation Address **Cairngorm Ski Area, Aviemore**
 Specific Location **Not Applicable**

Supply Cables

Length Unknown
 SWA 16 mm²



Earthing Arrangements

PFC 4.4 kA
 Earth Loop 0.11 Ohms
 Cable Sheath

Supplied From Main Supply 1
 Secondary Supply None

Circuit Schedule and Test Results

CIRCUIT		Cable		Overcurrent Device		Dis Time	Continuity Test			Insulation Test		Earth Loop	R.C.D. Test		
No	Designation	Points Served	Wiring	Method	BS No		Type	r1	r2	R1+R2	L/L		L/N	Max Z s	R.C.D.
Ø		Polarity	Phase	CPC	Rating	Rating	s	Ω	Ω	Ω	MΩ	MΩ	Zs	Rating	x5
			mm ²	mm ²	A	kA							Ω	mA	ms
1	Sockets - Ticket Office Front & Workshop Heater	4	SWA	B	60898	B	0.4	0.45	L	0.26	-	299	1.84	-	-
L1		P	2X2.5	CS	20	6		L	-	-	299	299	0.37	-	-
1	Spare MCB	-	-	-	60898	C	-	-	-	-	-	-	3.06	-	-
L2		-	-	-	6	10		-	-	-	-	-	-	-	-
1	Sockets - Ski Hire, Booking Office & Workshop Roof	-	-	-	-	-	-	-	-	-	-	-	-	-	-
L3		-	-	-	-	-	-	-	-	-	-	-	-	-	-
1	Heater	6	SWA/T+E	B	60898	B	0.4	-	-	0.39	-	299	1.15	-	-
L3		P	2.5/1.5	2.5/1	32	6		-	-	-	299	299	0.50	-	-
2	Spare	-	-	-	-	-	-	-	-	-	-	-	-	-	-
L1		-	-	-	-	-	-	-	-	-	-	-	-	-	-
2	Spare	-	-	-	-	-	-	-	-	-	-	-	-	-	-
L2		-	-	-	-	-	-	-	-	-	-	-	-	-	-
2	Camera Switch	1	PVC/PVC	B	60898	C	0.4	-	-	0.01	-	L	0.57	-	-
L3		P	16	16	32	10		-	-	-	299	299	0.12	-	-
3	Stone Grinder	1	SWA	C	60898	C	0.4	-	-	0.14	299	299	1.15	-	-
L123		P	2.5	2.5/CS	16	10		-	-	-	299	299	0.25	-	-
4	Double Belt Grinder	1	SWA	C	60898	C	0.4	-	-	0.17	299	299	1.15	-	-
L123		P	2.5	2.5/CS	16	10		-	-	-	299	299	0.28	-	-
5	Heater - Office	1	T+E	B	60898	C	0.4	-	-	0.19	-	L	1.15	-	-
L1		P	2.5	1.5	16	10		-	-	-	299	299	0.30	-	-
5	Sockets - Centre Near Side	12	T+E	B	60898	C	0.4	0.49	L	0.31	-	299	1.15	-	-
L2		P	2X2.5	2X1.5	16	10		L	-	-	299	299	0.42	-	-
5	Spare	-	-	-	-	-	-	-	-	-	-	-	-	-	-
L3		-	-	-	-	-	-	-	-	-	-	-	-	-	-
6	Spare	-	-	-	-	-	-	-	-	-	-	-	-	-	-
L1		-	-	-	-	-	-	-	-	-	-	-	-	-	-
6	Sockets - Accounts Office	5	T+E	B	60898	C	0.4	0.60	L	0.53	-	L	0.57	-	-
L2		P	2X2.5	2X1.5	32	10		L	-	-	299	299	0.64	-	-

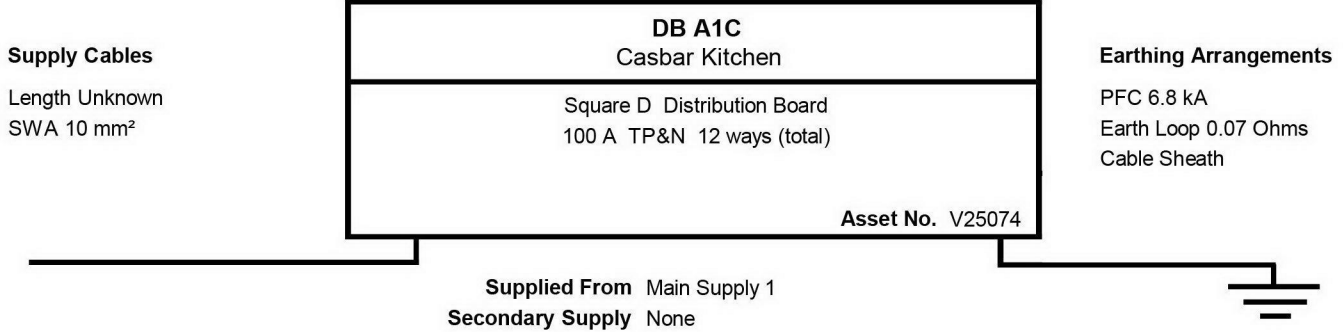
Occupier **CAIRNGORM MOUNTAIN LTD**
 Installation Address **Cairngorm Ski Area, Aviemore**
 Specific Location **Not Applicable**

Circuit Schedule and Test Results

CIRCUIT			Cable		Overcurrent Device		Dis Time	Continuity Test			Insulation Test		Earth Loop	R.C.D. Test	
No	Designation	Points Served	Wiring	Method	BS No	Type		r1	r2	R1+R2	L/L	L/N		Max Z _s	R.C.D.
Ø		Polarity	Phase	CPC	Rating	Rating	s	Ω	Ω	Ω	MΩ	MΩ	Z _s	Rating	x5
6	Sockets - Centre Office Stalls	6	T+E	B	60898	C	0.4	0.37	L	0.28	-	L	0.57	-	-
L3		P	2X2.5	2X1.5	32	10		L		-	299	299	0.39		
7	Lights - Office	4	T+E	B	60898	C	0.4	-	-	0.70	-	L	3.06	-	-
L1		P	1.5	1	6	10		-	-	-	299	299	0.81		
7	Lights - Office & Conference Room	7	T+E	B	60898	C	0.4	-	-	0.64	-	L	3.06	-	-
L2		P	1.5	1	6	10		-	-	-	299	299	0.75		
7	Lights - 3 Offices	9	T+E	B	60898	C	0.4	-	-	0.61	-	L	3.06	-	-
L3		P	1.5	1	6	10		-	-	-	299	299	0.72		
8	Spare	-	-	-	-	-	-	-	-	-	-	-	-	-	-
L123		-	-	-	-	-	-	-	-	-	-	-	-	-	-
9	Spare	-	-	-	-	-	-	-	-	-	-	-	-	-	-
L123		-	-	-	-	-	-	-	-	-	-	-	-	-	-
10	Spare	-	-	-	-	-	-	-	-	-	-	-	-	-	-
L123		-	-	-	-	-	-	-	-	-	-	-	-	-	-
11	Socket - Ski Hire Com	1	T+E	B	60898	C	0.4	-	-	0.22	-	299	1.15	-	-
L1		P	2.5	1.5	16	10		-	-	-	299	299	0.33		
11	Instant Kettle	1	T+E	B	60898	C	0.4	-	-	L	-	L	1.15	-	-
L2		P	2.5	1.5	16	10		-	-	-	299	299	L		
11	sockets - Ski Hire Office	5	T+E	B	61009	C	0.4	0.49	L	0.20	-	L	1666	30	18.8
L3		P	2X2.5	2X1.5	32	10		0.48		-	299	299	0.31		8.6
12	Sockets - Ski Hire Bench	4	T+E	B	61009	C	0.4	0.54	L	0.31	-	L	1666	30	17.4
L1		P	2X2.5	2X1.5	32	10		0.54		-	299	299	0.42		9.2
12	Sockets - Office & Board Room	6	T+E	B	60898	C	0.4	0.39	L	0.25	-	L	0.57	-	-
L2		P	2X2.5	2X1.5	32	10		L		-	299	299	0.36		
12	Sockets - Offices	6	T+E	B	60898	C	0.4	0.57	L	0.17	-	L	0.57	-	-
L3		P	2X2.5	2X1.5	32	10		L		-	299	299	0.28		

Tested By	Test Date	Instrument Type	Serial No	Instrument Type	Serial No
	10/04/2013	Megger	SHC/IT15		

Occupier **CAIRNGORM MOUNTAIN LTD**
 Installation Address **Cairngorm Ski Area, Aviemore**
 Specific Location **Not Applicable**

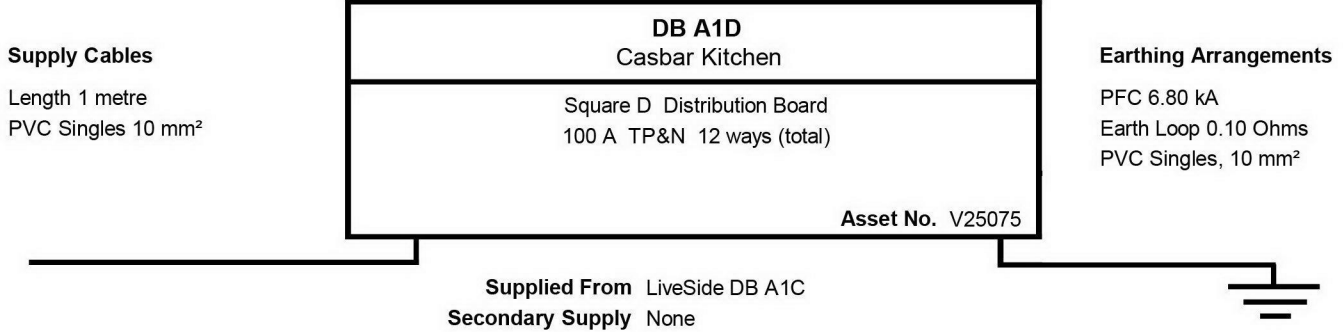


Circuit Schedule and Test Results

CIRCUIT			Cable		Overcurrent Device		Dis Time	Continuity Test			Insulation Test		Earth Loop	R.C.D. Test	
No	Designation	Points Served	Wiring	Method	BS No	Type		r1	r2	R1+R2	L/L	L/N		Max Z _s	R.C.D.
Ø		Polarity	Phase	CPC	Rating	Rating	s	rn	Ω	Ω	MΩ	MΩ	Z _s	Rating	x5
			mm ²	mm ²	A	kA		Ω	Ω	Ω	MΩ	MΩ	Ω	mA	ms
1	Ring - Bar Lounge & Shop	4	T+E	B	3871	4	0.4	0.47	L	0.23	-	L	-	-	-
L1		P	2X2.5	2X1.5	32	5		L	-	-	299	299	0.30	-	-
1	Hand Dryer - Ladies WC	1	T+E	B	3871	4	0.4	-	-	0.21	-	L	-	-	-
L2		P	2.5	1.5	10	5		-	-	-	299	299	0.28	-	-
1	Sockets - Prep Room	4	FP200	B	3871	4	0.4	0.38	L	0.12	-	L	-	-	-
L3		P	2X2.5	2X2.5	32	5		L	-	-	299	299	0.19	-	-
2	DB A1 - V25071	1	S	C	3871	4	0.4	-	-	L	299	299	-	-	-
L123		P	2.5	2.5	20	5		-	-	-	299	299	L	-	-
3	Sockets - Lyles Store	4	T+E	B	3871	4	0.4	0.51	L	0.16	-	L	-	-	-
L1		P	2X2.5	2X1.5	30	5		L	-	-	299	299	0.23	-	-
3	Hand Dryer - Ladies WC	1	T+E	B	3871	4	0.4	-	-	0.25	-	L	-	-	-
L2		P	2.5	1.5	15	5		-	-	-	299	299	0.32	-	-
3	Coffee Machine	1	T+E	B	3871	4	0.4	-	-	0.19	-	L	-	-	-
L3		P	2.5	1.5	20	5		-	-	-	299	299	0.26	-	-
4	Sockets - Bar Lounge & WC Passage	5	T+E	B	3871	4	0.4	0.42	L	0.24	-	L	-	-	-
L1		P	2X2.5	2X1.5	30	5		L	-	-	299	299	0.31	-	-
4	Hand Dryer - Disabled WC	1	T+E	B	3871	4	0.4	-	-	0.30	-	L	-	-	-
L2		P	2.5	1.5	15	5		-	-	-	299	299	0.37	-	-
4	Shop Sub Board - V25081	1	T+E	B	3871	4	0.4	-	-	0.07	-	L	-	-	-
L3		P	10	4	30	5		-	-	-	299	299	0.14	-	-

Tested By	Test Date	Instrument Type	Serial No	Instrument Type	Serial No
██████████	11/04/2013	Megger	SHC/IT15		

Occupier **CAIRNGORM MOUNTAIN LTD**
 Installation Address **Cairngorm Ski Area, Aviemore**
 Specific Location **Not Applicable**



Circuit Schedule and Test Results

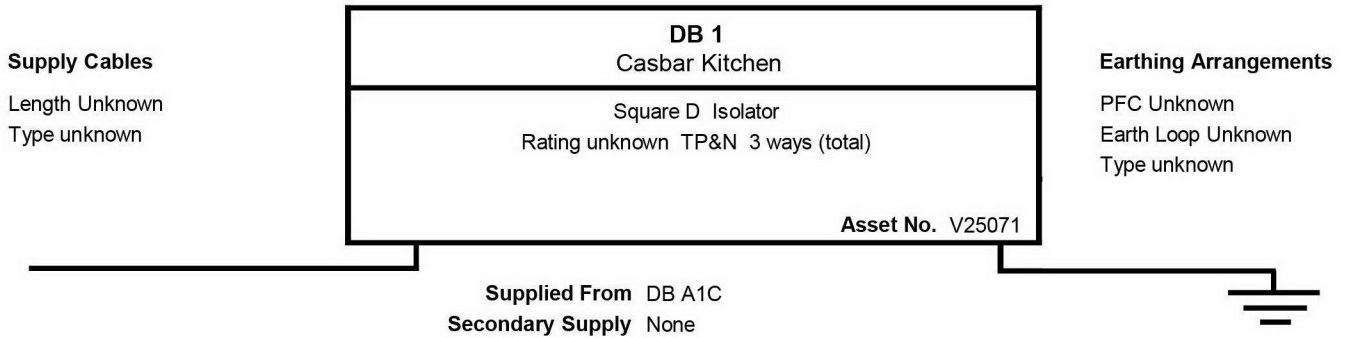
CIRCUIT			Cable		Overcurrent Device		Dis Time	Continuity Test			Insulation Test		Earth Loop	R.C.D. Test	
No	Designation	Points Served	Wiring Phase	Method CPC	BS No Rating A	Type Rating kA	s	r1 rn	r2	R1+R2 R2	L/L L/E	L/N N/E	Max Z s Zs	R.C.D. Rating	x1 x5
Ø		Polarity	mm ²	mm ²				Ω	Ω	Ω	MΩ	MΩ	Ω	mA	ms
1	Spare MCB	-	-	-	3871	4	-	-	-	-	-	-	L	-	-
L123		-	-	-	20	5		-	-	-	-	-	-	-	-
2	Door Heater - Bar	1	T+E	B	3871	3	0.4	-	-	0.32	-	L	0.92	-	-
L123		P	2.5	1.5	20	9		-	-	-	299	299	0.42	-	-
3	Door Heater - Shop	1	T+E	B	3871	4	0.4	-	-	0.37	-	L	L	-	-
L123		P	2.5	1.5	20	5		-	-	-	299	299	0.47	-	-
4	Spare MCB	-	-	-	3871	4	-	-	-	-	-	-	L	-	-
L1		-	-	-	20	5		-	-	-	-	-	-	-	-
4	Tumble Dryer	1	T+E	B	4293	B	0.4	-	-	0.23	-	299	1666	30	34
L2		P	4	2.5	32	10		-	-	-	299	299	0.33	-	16
4	Spurs - Shop	2	T+E	B	3871	4	0.4	-	-	0.30	-	L	L	-	-
L3		P	2.5	1.5	20	5		-	-	-	299	299	0.40	-	-

Tested By	Test Date	Instrument Type	Serial No	Instrument Type	Serial No
██████████	10/04/2013	Megger	SHC/IT15		

Equipment Report

Section 6 [11]

Occupier **CAIRNGORM MOUNTAIN LTD**
 Installation Address **Cairngorm Ski Area, Aviemore**
 Specific Location **Not Applicable**

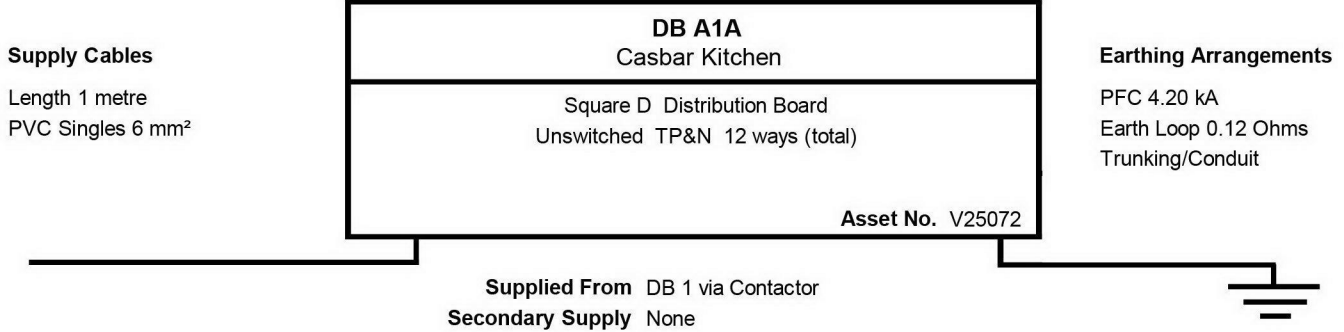


Circuit Schedule and Test Results

CIRCUIT			Cable		Overcurrent Device		Dis Time	Continuity Test			Insulation Test		Earth Loop	R.C.D. Test	
No	Designation	Points Served	Wiring Phase	Method CPC	BS No Rating	Type Rating	s	r1 rn	r2	R1+R2 R2	L/L L/E	L/N N/E	Max Zs Zs	R.C.D. Rating	x1 x5
Ø		Polarity	mm ²	mm ²	A	kA		Ω	Ω	Ω	MΩ	MΩ	Ω	mA	ms
1	DB A1A V25072 & A1B V25073	2	S	B	L	L	5	-	-	L	299	299	L	-	-
L123		P	6	MF	L	L		-	-	-	299	299	0.10	-	-

Tested By	Test Date	Instrument Type	Serial No	Instrument Type	Serial No
██████████	11/04/2013	Megger	SHC/IT15		

Occupier **CAIRNGORM MOUNTAIN LTD**
 Installation Address **Cairngorm Ski Area, Aviemore**
 Specific Location **Not Applicable**



Circuit Schedule and Test Results

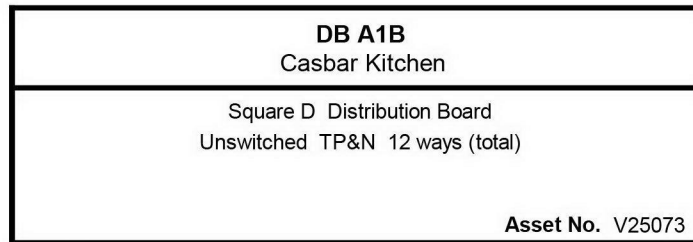
CIRCUIT			Cable		Overcurrent Device		Dis Time	Continuity Test			Insulation Test		Earth Loop	R.C.D. Test	
No	Designation	Points Served	Wiring Phase	Method CPC	BS No Rating A	Type Rating kA	s	r1 rn	r2	R1+R2 R2	L/L L/E	L/N N/E	Max Z s Zs	R.C.D. Rating	x1 x5
Ø		Polarity	mm ²	mm ²				Ω	Ω	Ω	MΩ	MΩ	Ω	mA	ms
1	Spare MCB	-	-	-	3871	4	-	-	-	-	-	-	L	-	-
L1		-	-	-	5	5		-	-	-	-	-	-	-	-
1	Lights - Ladies WCs & Passage	8	T+E	B	3871	4	0.4	-	-	0.47	-	L	L	-	-
L2		P	1.5	1	5	5		-	-	-	299	299	0.59	-	-
1	Spare MCB	-	-	-	3871	4	-	-	-	-	-	-	L	-	-
L3		-	-	-	5	5		-	-	-	-	-	-	-	-
2	Lights - Bar Entrance	4	T+E	B	3871	4	0.4	-	-	0.49	-	L	L	-	-
L1		P	1.5	1	5	5		-	-	-	299	299	0.61	-	-
2	Lights - Lyles Store	6	T+E	B	3871	4	0.4	-	-	0.54	-	L	L	-	-
L2		P	1.5	1	5	5		-	-	-	299	299	0.66	-	-
2	Unknown	L	T+E	B	3871	4	0.4	-	-	L	-	L	L	-	-
L3		L	1.5	1	5	5		-	-	-	299	299	L	-	-
3	Spare MCB	-	-	-	3871	4	-	-	-	-	-	-	L	-	-
L123		-	-	-	5	5		-	-	-	-	-	-	-	-
4	Spare MCB	-	-	-	3871	4	-	-	-	-	-	-	L	-	-
L1		-	-	-	5	5		-	-	-	-	-	-	-	-
4	Spare MCB	-	-	-	3871	4	-	-	-	-	-	-	L	-	-
L2		-	-	-	5	5		-	-	-	-	-	-	-	-
4	Unknown	L	T+E	B	3871	4	0.4	-	-	L	-	L	L	-	-
L3		L	1.5	1	5	5		-	-	-	299	299	L	-	-

Tested By	Test Date	Instrument Type	Serial No	Instrument Type	Serial No
██████████	11/04/2013	Megger	SHC/IT15		

Occupier **CAIRNGORM MOUNTAIN LTD**
 Installation Address **Cairngorm Ski Area, Aviemore**
 Specific Location **Not Applicable**

Supply Cables

Length 1 metre
 PVC Singles 6 mm²



Earthing Arrangements

PFC 4.20 kA
 Earth Loop 0.12 Ohms
 PVC Singles, 6 mm²
 Trunking/Conduit

Supplied From DB A1C
 Secondary Supply None

Circuit Schedule and Test Results

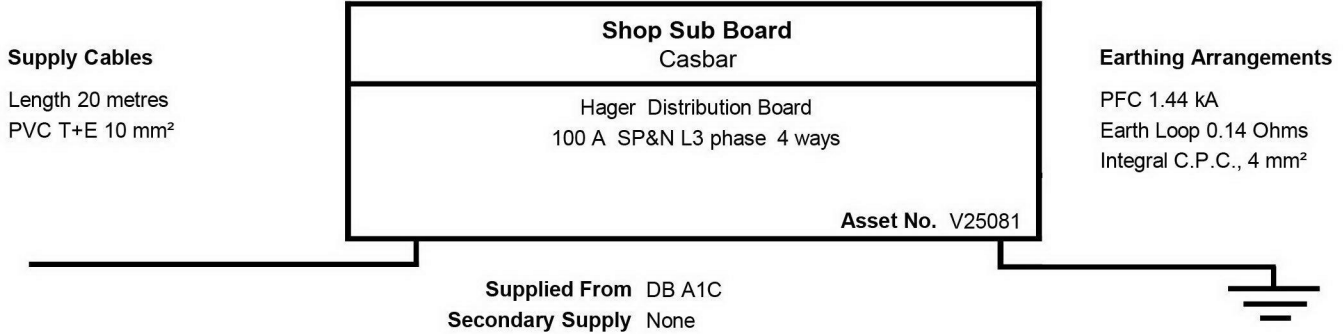
CIRCUIT			Cable		Overcurrent Device		Dis Time	Continuity Test			Insulation Test		Earth Loop	R.C.D. Test	
No	Designation	Points Served	Wiring Phase	Method CPC	BS No Rating	Type Rating	s	r1 rn	r2	R1+R2 R2	L/L L/E	L/N N/E	Max Z s Zs	R.C.D. Rating	x1 x5
Ø		Polarity	mm ²	mm ²	A	kA		Ω	Ω	Ω	MΩ	MΩ	Ω	mA	ms
1	Spare MCB	-	-	-	3871	4	-	-	-	-	-	-	L	-	-
L1		-	-	-	5	5		-	-	-	-	-	-	-	-
1	Lights - Kitchen	6	T+E	B	3871	4	0.4	-	-	0.57	-	L	L	-	-
L2		P	3X1.5	3X1	5	5		-	-	-	299	299	0.69	-	-
1	Fan - Prep Area	1	T+E	B	3871	4	0.4	-	-	0.43	-	L	L	-	-
L3		P	1.5	1	5	5		-	-	-	299	299	0.55	-	-
2	Fan - Bar Lounge	1	T+E	B	3871	4	0.4	-	-	0.34	-	L	L	-	-
L1		P	2.5	1.5	5	5		-	-	-	299	299	0.46	-	-
2	Fan - Kitchen	1	T+E	B	3871	4	0.4	-	-	0.44	-	L	L	-	-
L2		P	1.5	1	5	5		-	-	-	299	299	0.56	-	-
2	Lights - Prep Room	2	T+E	B	3871	4	0.4	-	-	0.52	-	L	L	-	-
L3		P	2X1.5	2X1	5	5		-	-	-	299	299	0.64	-	-
3	Lights - Rear corridor	3	T+E	B	3871	4	0.4	-	-	0.57	-	L	L	-	-
L1		P	1.5	1	5	5		-	-	.	299	299	0.69	-	-
3	Unknown	L	T+E	B	3871	4	0.4	-	-	L	-	L	L	-	-
L2		L	1.5	1	5	5		-	-	-	299	299	L	-	-
3	Unknown	L	T+E	B	3871	4	0.4	-	-	L	-	L	L	-	-
L3		L	1.5	1	5	5		-	-	-	299	299	L	-	-
4	Fan - WC	1	T+E	B	3871	4	0.4	-	-	0.27	-	L	L	-	-
L1		P	2.5	1.5	5	5		-	-	-	299	299	0.39	-	-
4	Spare	-	-	-	-	-	-	-	-	-	-	-	-	-	-
L2		-	-	-	-	-	-	-	-	-	-	-	-	-	-
4	Spare	-	-	-	-	-	-	-	-	-	-	-	-	-	-
L3		-	-	-	-	-	-	-	-	-	-	-	-	-	-

Tested By	Test Date	Instrument Type	Serial No	Instrument Type	Serial No
██████████	09/04/2013	Megger	SHC/IT15		

Equipment Report

Section 6 [14]

Occupier **CAIRNGORM MOUNTAIN LTD**
 Installation Address **Cairngorm Ski Area, Aviemore**
 Specific Location **Not Applicable**

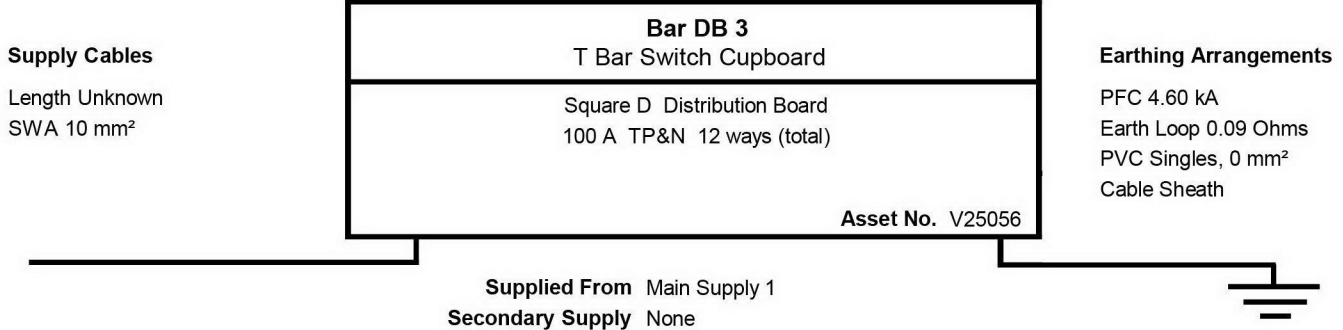


Circuit Schedule and Test Results

CIRCUIT			Cable		Overcurrent Device		Dis Time	Continuity Test			Insulation Test		Earth Loop	R.C.D. Test	
No	Designation	Points Served	Wiring Phase	Method CPC	BS No Rating	Type Rating		r1	r2	R1+R2	L/L	L/N		Max Z s	R.C.D. Rating
Ø		Polarity	mm ²	mm ²	A	kA	s	Ω	Ω	Ω	MΩ	MΩ	Ω	mA	ms
1	Sockets - Shop Counter	3	T+E	B	60898	B	0.4	0.46	L	0.19	-	299	1.15	-	-
L3		P	2X2.5	2X1.5	32	6		0.45		-	299	299	0.33		
2	Cupboard Socket by DB	1	T+E	B	60898	B	0.4	-	-	0.08	-	299	1.84	-	-
L3		P	2.5	1.5	20	6		-		-	299	299	0.22		
3	Lights - Shop	9	T+E	B	60898	B	0.4	-	-	0.55	-	L	6.13	-	-
L3		P	1.5	1	6	6		-		-	299	299	0.69		
4	Lights - Shop	16	T+E	B	60898	B	0.4	-	-	0.65	-	L	6.13	-	-
L3		P	1.5	1	6	6		-		-	299	299	0.79		

Tested By		Test Date	Instrument Type		Serial No	Instrument Type		Serial No
[REDACTED]		11/04/2013	Megger		SHC/IT15			

Occupier CAIRNGORM MOUNTAIN LTD
Installation Address Cairngorm Ski Area, Aviemore
Specific Location Not Applicable

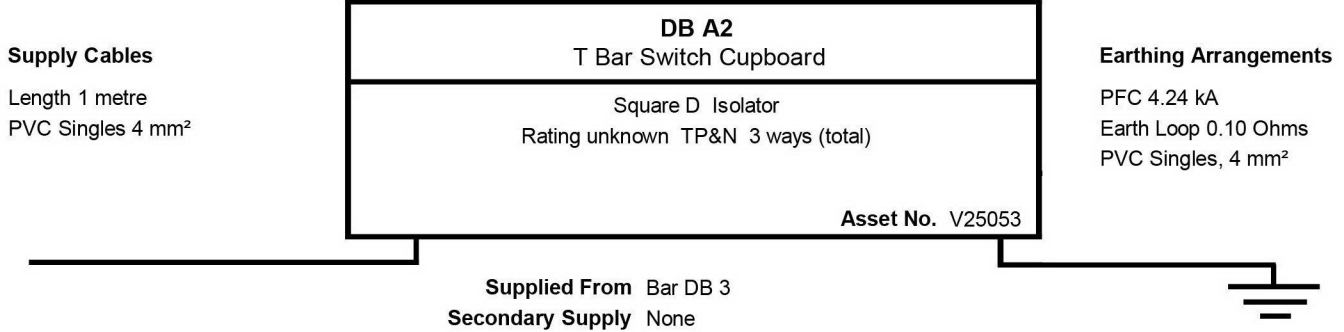


Circuit Schedule and Test Results

CIRCUIT			Cable		Overcurrent Device		Dis Time	Continuity Test			Insulation Test		Earth Loop	R.C.D. Test	
No	Designation	Points Served	Wiring	Method	BS No	Type		r1	r2	R1+R2	L/L	L/N		Max Z _s	R.C.D.
Ø		Polarity	Phase	CPC	Rating	Rating	s	Ω	Ω	Ω	MΩ	MΩ	Z _s	Rating	x5
			mm ²	mm ²	A	kA							Ω	mA	ms
1	Sockets - Cafeteria	6	T+E	B	3871	4	0.4	0.40	L	0.40	-	299	L	-	-
L1		P	2X2.5	2X1.5	30	5		L		-	299	299	0.49	-	-
1	Till Supplies - Bar & Servery	2	T+E	B	3871	4	0.4	-	-	0.28	-	299	L	-	-
L2		P	2.5	1.5	15	5		-	-	-	299	299	0.37	-	-
1	Hand Dryer - Male WC	1	T+E	B	3871	4	0.4	-	-	0.30	-	L	L	-	-
L3		P	2.5	1.5	20	5		-	-	-	299	299	0.39	-	-
2	DB A2 - V25053	1	S	B	3871	4	0.4	-	-	0.07	299	299	L	-	-
L123		P	2.5	1.5	20	5		-	-	-	299	299	0.16	-	-
3	Sockets - Store Water Filter	4	T+E	B	3871	4	0.4	0.36	L	0.30	-	L	L	-	-
L1		P	2X2.5	2X1.5	30	5		L		-	299	299	0.39	-	-
3	Sockets & Fire Panel - Corridor & Stores	6	T+E	B	3871	4	0.4	0.44	L	0.45	-	L	L	-	-
L2		P	2X2.5	2X1.5	30	5		L		-	299	299	0.54	-	-
3	Heaters - Corridor & WC	3	T+E	B	3871	4	0.4	-	-	0.38	-	L	L	-	-
L3		P	2X2.5	2X1.5	10	5		-	-	-	299	299	0.47	-	-
4	Hand Dryers - Female & Disabled WC	3	T+E	B	60898	B	0.4	-	-	0.35	-	L	1.15	-	-
L1		P	3X2.5	3X1.5	32	6		-	-	-	299	299	0.44	-	-
4	Cash Hut	4	T+E	B	3871	3	0.4	-	-	0.31	-	L	1.15	-	-
L2		P	2X1.5	2X1	16	L		-	-	-	299	299	0.40	-	-
4	Ring Main - Bar Sockets	6	T+E	B	3871	4	0.4	0.28	L	0.27	-	299	L	-	-
L3		P	3X2.5	3X1.5	30	5		L		-	299	299	0.36	-	-

Tested By	Test Date	Instrument Type	Serial No	Instrument Type	Serial No
██████████	10/04/2013	Megger	SHC/IT15		

Occupier **CAIRNGORM MOUNTAIN LTD**
 Installation Address **Cairngorm Ski Area, Aviemore**
 Specific Location **Not Applicable**



Circuit Schedule and Test Results

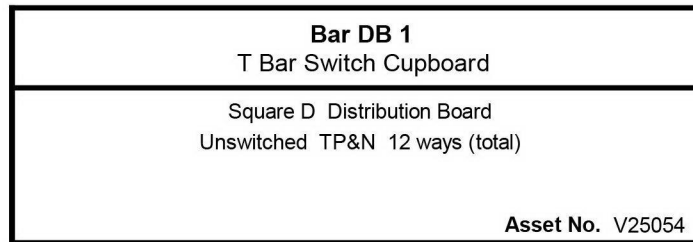
CIRCUIT			Cable		Overcurrent Device		Dis Time	Continuity Test			Insulation Test		Earth Loop	R.C.D. Test	
No	Designation	Points Served	Wiring Phase	Method CPC	BS No Rating	Type Rating	s	r1 rn	r2	R1+R2 R2	L/L L/E	L/N N/E	Max Z s Zs	R.C.D. Rating	x1 x5
Ø		Polarity	mm ²	mm ²	A	kA		Ω	Ω	Ω	MΩ	MΩ	Ω	mA	ms
1	Bar DB 1 V25054 & Bar DB 2 V25055	2	S	B	L	L	5	-	-	0.03	299	299	L	-	-
L123		P	2X4	2X4	L	L		-	-	-	299	299	0.13	-	-

Tested By	Test Date	Instrument Type	Serial No	Instrument Type	Serial No
R MacDonald	09/04/2013	Megger	SHC/IT15		

Occupier CAIRNGORM MOUNTAIN LTD
Installation Address Cairngorm Ski Area, Aviemore
Specific Location Not Applicable

Supply Cables

Length 1 metre
PVC Singles 6 mm²



Earthing Arrangements

PFC 3.94 kA
 Earth Loop 0.13 Ohms
 PVC Singles, 6 mm²
 Trunking/Conduit

Supplied From DB A2 via Contactor
 Secondary Supply None

Circuit Schedule and Test Results

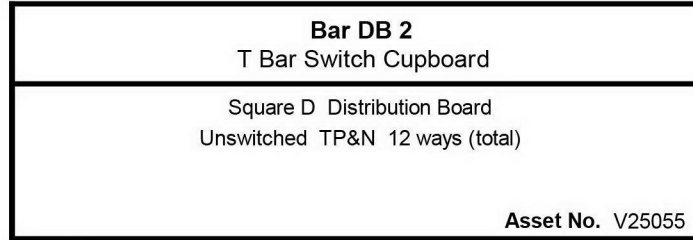
CIRCUIT		Cable		Overcurrent Device		Dis Time	Continuity Test			Insulation Test		Earth Loop	R.C.D. Test		
No	Designation	Points Served	Wiring	Method	BS No		Type	r1	r2	R1+R2	L/L		L/N	Max Z s	R.C.D.
Ø		Polarity	Phase	CPC	Rating	Rating	s	Ω	Ω	Ω	MΩ	MΩ	Zs	Rating	x5
			mm ²	mm ²	A	kA							Ω	mA	ms
1	Lights - Cafeteria Row	8	T+E	B	3871	4	0.4	-	-	0.89	-	L	L	-	-
L1		P	1.5	1	5	5		-	-	-	299	299	1.02	-	-
1	Spare MCB	-	-	-	3871	4	-	-	-	-	-	-	L	-	-
L2		-	-	-	5	5		-	-	-	-	-	-	-	-
1	Lights - Servery	4	T+E	B	3871	4	0.4	-	-	0.75	-	L	L	-	-
L3		P	1.5	1	5	5		-	-	-	299	299	0.88	-	-
2	Lights - Cafeteria Row 3	8	T+E	B	3871	4	0.4	-	-	0.78	-	L	L	-	-
L1		P	1.5	1	5	5		-	-	-	299	299	0.91	-	-
2	Lights - Female WC	6	T+E	B	3871	4	0.4	-	-	0.56	-	L	L	-	-
L2		P	1.5	1	5	5		-	-	-	299	299	0.69	-	-
2	Lights - Male WC	6	T+E	B	3871	4	0.4	-	-	0.71	-	L	L	-	-
L3		P	1.5	1	5	5		-	-	-	299	299	0.84	-	-
3	Lights - Corridor & Cold Room	5	T+E	B	3871	4	0.4	-	-	0.99	-	L	L	-	-
L1		P	1.5	1	5	5		-	-	-	299	299	1.12	-	-
3	Lights - Stair Entrance	10	T+E	B	3871	4	0.4	-	-	0.92	-	L	L	-	-
L2		P	2X1.5	2X1	5	5		-	-	-	299	299	1.06	-	-
3	Lights - Staff WC & Bar	5	T+E	B	3871	4	0.4	-	-	0.79	-	L	L	-	-
L3		P	3X1.5	3X1	5	5		-	-	-	299	299	0.92	-	-
4	Lift Room & Exhibition Lights	7	T+E	B	3871	4	0.4	-	-	0.83	-	L	L	-	-
L1		P	2.5/1.5	1.5/1	5	5		-	-	-	299	299	0.96	-	-
4	Spare MCB	-	-	-	3871	4	-	-	-	-	-	-	L	-	-
L2		-	-	-	5	5		-	-	-	-	-	-	-	-
4	Fan - WC	1	T+E	B	3871	4	0.4	-	-	0.41	-	L	L	-	-
L3		P	1.5	1	5	5		-	-	-	299	299	0.54	-	-

Tested By	Test Date	Instrument Type	Serial No	Instrument Type	Serial No
C McDonald	10/04/2013	Megger	SHC/IT15		

Occupier **CAIRNGORM MOUNTAIN LTD**
 Installation Address **Cairngorm Ski Area, Aviemore**
 Specific Location **Not Applicable**

Supply Cables

Length Unknown
 PVC Singles 6 mm²



Earthing Arrangements

PFC 5.4 kA
 Earth Loop 0.08 Ohms
 PVC Singles, 6 mm²
 Trunking/Conduit

Supplied From Bar DB 3
 Secondary Supply None

Circuit Schedule and Test Results

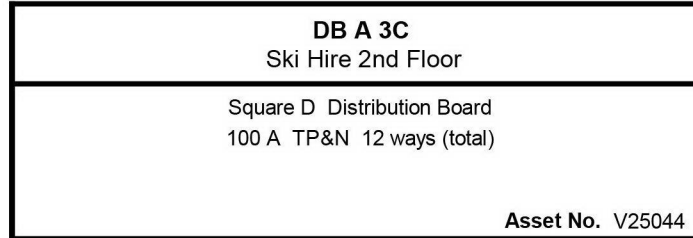
CIRCUIT			Cable		Overcurrent Device		Dis Time	Continuity Test			Insulation Test		Earth Loop	R.C.D. Test	
No	Designation	Points Served	Wiring Phase	Method CPC	BS No Rating	Type Rating	s	r1 rn	r2	R1+R2 R2	L/L L/E	L/N N/E	Max Z s Zs	R.C.D. Rating	x1 x5
Ø		Polarity	mm ²	mm ²	A	kA		Ω	Ω	Ω	MΩ	MΩ	Ω	mA	ms
1	Lights - Cafeteria Row 2	8	T+E	B	3871	4	0.4	-	-	0.78	-	L	L	-	-
L1		P	1.5	1	5	5		-	-	-	299	299	0.86	-	-
1	Lights - Servery	4	T+E	B	3871	4	0.4	-	-	0.63	-	L	L	-	-
L2		P	1.5	1	5	5		-	-	-	299	299	0.71	-	-
1	Lights - Kitchen + Emergency Lighting	6	T+E	B	3871	4	0.4	-	-	0.79	-	L	L	-	-
L3		P	2X1.5	2X1	5	5		-	-	-	299	299	0.87	-	-
2	Spare MCB	-	-	-	3871	4	-	-	-	-	-	-	L	-	-
L123		-	-	-	5	5		-	-	-	-	-	-	-	-
3	Lights - Porch & Outside	4	T+E	B	3871	4	0.4	-	-	1.02	-	L	L	-	-
L1		P	3X1.5	3X1	5	5		-	-	-	299	299	1.10	-	-
3	Lights - Refuse & Dry Goods	4	T+E	B	3871	4	0.4	-	-	0.72	-	L	L	-	-
L2		P	1.5	1	5	5		-	-	-	299	299	0.80	-	-
3	Fan - Servery	1	T+E	B	60898	B	0.4	-	-	0.49	-	L	3.68	-	-
L3		P	1.5	1	10	6		-	-	-	299	299	0.57	-	-
4	Lights - Cafeteria Row 4	8	FP200	B	3871	4	0.4	-	-	0.81	-	L	L	-	-
L1		P	2.5	2.5	5	5		-	-	-	299	299	0.89	-	-
4	Spare MCB	-	-	-	3871	4	-	-	-	-	-	-	L	-	-
L2		-	-	-	5	5		-	-	-	-	-	-	-	-
4	Spare MCB	-	-	-	3871	4	-	-	-	-	-	-	L	-	-
L3		-	-	-	5	5		-	-	-	-	-	-	-	-

Tested By	Test Date	Instrument Type	Serial No	Instrument Type	Serial No
██████████	09/04/2013	Megger	SHC/IT15		

Occupier CAIRNGORM MOUNTAIN LTD
Installation Address Cairngorm Ski Area, Aviemore
Specific Location Not Applicable

Supply Cables

Length Unknown
SWA 16 mm²



Earthing Arrangements

PFC 7.20 kA
 Earth Loop 0.09 Ohms
 Cable Sheath

Supplied From Main Supply 1
Secondary Supply None

Circuit Schedule and Test Results

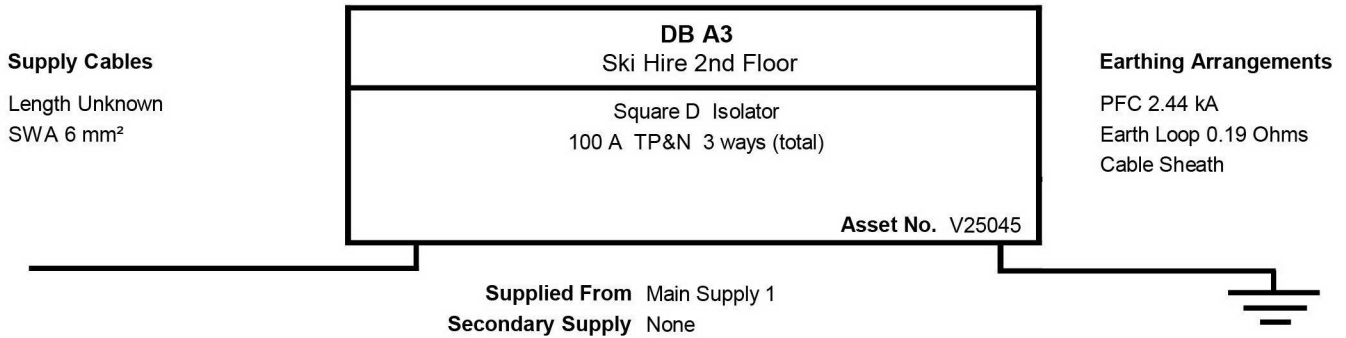
CIRCUIT		Cable		Overcurrent Device		Dis Time	Continuity Test			Insulation Test		Earth Loop	R.C.D. Test		
No	Designation	Points Served	Wiring	Method	BS No		Type	r1	r2	R1+R2	L/L		L/N	Max Z _s	R.C.D.
Ø		Polarity	Phase	CPC	Rating	Rating	s	Ω	Ω	Ω	MΩ	MΩ	Z _s	Rating	x5
			mm ²	mm ²	A	kA							Ω	mA	ms
1	Sockets - Servery	5	T+E	B	3871	4	0.4	0.38	L	0.33	-	299	L	-	-
L1		P	2X2.5	2X1.5	30	5		L		-	299	299	0.42	-	-
1	Sockets - Ticket Area	6	T+E	B	3871	4	0.4	0.42	L	0.37	-	299	L	-	-
L2		P	2X2.5	2X1.5	30	5		L		-	299	299	0.46	-	-
1	Sockets	4	T+E	B	3871	4	0.4	0.42	L	0.35	-	299	L	-	-
L3		P	2X2.5	2X1.5	30	5		L		-	299	299	0.44	-	-
2	DB A3 - V25045	1	S	B	3871	4	5	-	-	0.10	-	299	L	-	-
L123		P	6	6	20	5		-		-	299	299	0.19	-	-
3	Sockets - General Office	8	T+E	B	3871	4	0.4	0.33	L	0.30	-	299	L	-	-
L1		P	2X2.5	2X1.5	30	5		L		-	299	299	0.39	-	-
3	Sockets - Shop	4	T+E	B	3871	4	0.4	0.59	L	0.45	-	299	L	-	-
L2		P	3X2.5	3X1.5	30	5		L		-	299	299	0.54	-	-
3	Sockets - Ticket Sales	6	T+E	B	3871	4	0.4	0.54	L	0.37	-	299	L	-	-
L3		P	2X2.5	2X1.5	30	5		L		-	299	299	0.46	-	-
4	Sockets - Concourse	4	T+E	B	3871	4	0.4	0.62	L	0.50	-	299	L	-	-
L1		P	2X2.5	2X1.5	30	5		L		-	299	299	0.59	-	-
4	Socket - Coffee Machine	1	T+E	B	3871	4	0.4	-	-	0.35	-	299	L	-	-
L2		P	2.5	1.5	30	5		-		-	299	299	0.44	-	-
4	Heating	3	T+E	B	3871	4	0.4	-	-	0.57	-	L	L	-	-
L3		P	3X1.5	3X1	10	5		-		-	299	299	0.66	-	-

Tested By	Test Date	Instrument Type	Serial No	Instrument Type	Serial No
C McDonald	11/04/2013	Megger	SHC/IT15		

Equipment Report

Section 6 [20]

Occupier **CAIRNGORM MOUNTAIN LTD**
 Installation Address **Cairngorm Ski Area, Aviemore**
 Specific Location **Not Applicable**



Circuit Schedule and Test Results

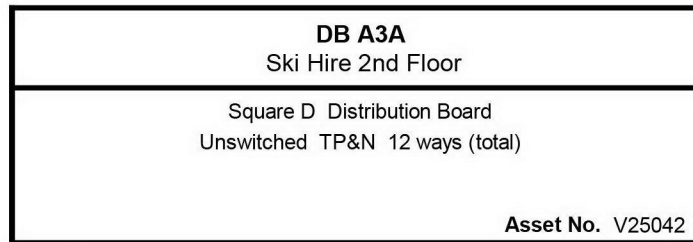
CIRCUIT			Cable		Overcurrent Device		Dis Time	Continuity Test			Insulation Test		Earth Loop	R.C.D. Test	
No	Designation	Points Served	Wiring	Method	BS No	Type		r1	r2	R1+R2	L/L	L/N		Max Z s	R.C.D.
Ø		Polarity	Phase	CPC	Rating	Rating	s	Ω	Ω	Ω	MΩ	MΩ	Zs	Rating	x5
			mm ²	mm ²	A	kA							Ω	mA	ms
1	DB A3A V25042 & DB A3B V25043	2	S	C	L	L	5	-	-	0.01	299	299	L	-	-
L123		P	6	MF	100	L		-	-	-	299	299	0.19	-	-

Tested By	Test Date	Instrument Type	Serial No	Instrument Type	Serial No
C McDonald	11/04/2013	Megger	SHC/IT15		

Occupier CAIRNGORM MOUNTAIN LTD
Installation Address Cairngorm Ski Area, Aviemore
Specific Location Not Applicable

Supply Cables

Length 1 metre
PVC Singles 6 mm²



Earthing Arrangements

PFC 2.44 kA
 Earth Loop 0.19 Ohms
 PVC Singles, 6 mm²
 Trunking/Conduit

Supplied From DB A3 via Contactor
 Secondary Supply None

Circuit Schedule and Test Results

CIRCUIT		Cable		Overcurrent Device		Dis Time	Continuity Test			Insulation Test		Earth Loop	R.C.D. Test		
No	Designation	Points Served	Wiring	Method	BS No		Type	r1	r2	R1+R2	L/L		L/N	Max Z s	R.C.D.
Ø		Polarity	Phase	CPC	Rating	Rating	s	Ω	Ω	Ω	MΩ	MΩ	Zs	Rating	x5
			mm ²	mm ²	A	kA							Ω	mA	ms
1	Lights - Servery & Entrance	4	T+E	B	3871	4	0.4	-	-	0.50	-	L	L	-	-
L1		P	2.5	1.5	5	5		-	-	-	299	299	0.62	-	-
1	Lights - Shop	6	T+E	B	3871	4	0.4	-	-	0.62	-	L	L	-	-
L2		P	2.5	1.5	5	5		-	-	-	299	299	0.74	-	-
1	Lights - Ski Store	9	T+E	B	3871	4	0.4	-	-	0.64	-	L	L	-	-
L3		P	3X1.5	3X1	5	5		-	-	-	299	299	0.76	-	-
2	Lights - Concourse	9	T+E	B	3871	4	0.4	-	-	0.72	-	L	L	-	-
L1		P	2X1.5	2X1	5	5		-	-	-	299	299	0.84	-	-
2	Spare MCB	-	-	-	3871	4	-	-	-	-	-	-	L	-	-
L2		-	-	-	5	5		-	-	-	-	-	-	-	-
2	Unknown	L	T+E	B	3871	4	0.4	-	-	L	-	L	L	-	-
L3		L	1.5	1	5	5		-	-	-	299	299	L	-	-
3	Spare MCB	-	-	-	3871	4	-	-	-	-	-	-	L	-	-
L1		-	-	-	5	5		-	-	-	-	-	-	-	-
3	Spare MCB	-	-	-	3871	4	-	-	-	-	-	-	L	-	-
L2		-	-	-	5	5		-	-	-	-	-	-	-	-
3	Lights - Ski WC	6	T+E	B	3871	4	0.4	-	-	0.65	-	L	L	-	-
L3		P	2X1.5	2S1	5	5		-	-	-	299	299	0.77	-	-
4	Fan	1	T+E	B	3871	4	0.4	-	-	0.37	-	L	L	-	-
L1		P	2.5	1.5	10	5		-	-	-	299	299	0.49	-	-
4	Spare MCB	-	-	-	3871	1	-	-	-	-	-	-	1.44	-	-
L2		-	-	-	32	6		-	-	-	-	-	-	-	-
4	Spare	-	-	-	-	-	-	-	-	-	-	-	-	-	-
L3		-	-	-	-	-		-	-	-	-	-	-	-	-

Tested By	Test Date	Instrument Type	Serial No	Instrument Type	Serial No
██████████	11/04/2013	Megger	SHC/IT15		

Occupier **CAIRNGORM MOUNTAIN LTD**
 Installation Address **Cairngorm Ski Area, Aviemore**
 Specific Location **Not Applicable**

Supply Cables

Length 0.5 metres
 PVC Singles 6 mm²



Earthing Arrangements

PFC 2.44 kA
 Earth Loop 0.19 Ohms
 PVC Singles, 6 mm²
 Trunking/Conduit

Supplied From DB A3 via Contactor
 Secondary Supply None

Circuit Schedule and Test Results

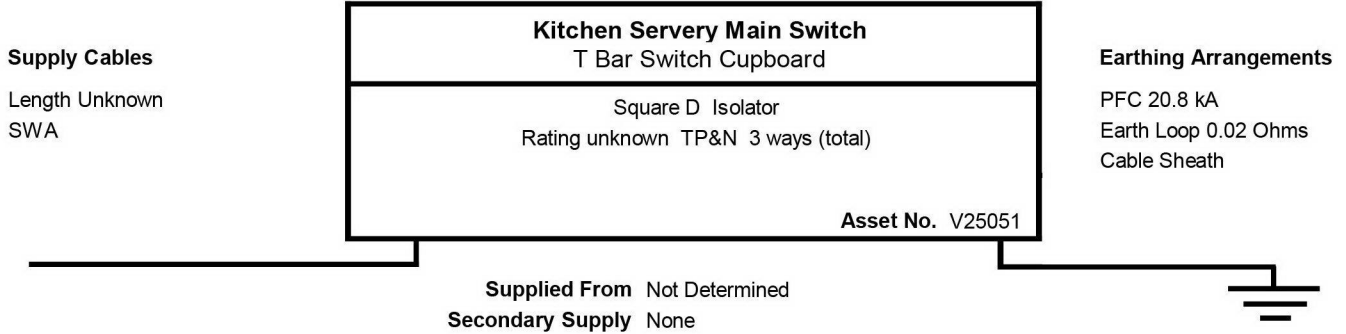
CIRCUIT			Cable		Overcurrent Device		Dis Time	Continuity Test			Insulation Test		Earth Loop	R.C.D. Test	
No	Designation	Points Served	Wiring Phase	Method CPC	BS No Rating	Type Rating	s	r1 rn	r2	R1+R2 R2	L/L L/E	L/N N/E	Max Z s Zs	R.C.D. Rating	x1 x5
Ø		Polarity	mm ²	mm ²	A	kA		Ω	Ω	Ω	MΩ	MΩ	Ω	mA	ms
1	Lights - Gen Office	6	T+E	B	3871	4	0.4	-	-	0.43	-	L	L	-	-
L1		P	2X1.5	2X1	5	5		-	-	-	299	299	0.62	-	-
1	Lights - Ranger/Casualty	4	T+E	B	3871	4	0.4	-	-	0.47	-	L	L	-	-
L2		P	2X1.5	2X1	5	5		-	-	-	299	299	0.66	-	-
1	Lights - Main Stairs	4	T+E	B	3871	4	0.4	-	-	0.54	-	L	L	-	-
L3		P	1.5	1	5	5		-	-	-	299	299	0.73	-	-
2	Lights - Concourse	5	T+E	B	3871	4	0.4	-	-	0.39	-	L	L	-	-
L1		P	1.5	1	5	5		-	-	-	299	299	0.58	-	-
2	Unknown	L	T+E	B	3871	4	0.4	-	-	L	-	L	L	-	-
L2		L	1.5	1	5	5		-	-	-	299	299	L	-	-
2	Spare MCB	-	-	-	3871	4	-	-	-	-	-	-	L	-	-
L3		-	-	-	5	5		-	-	-	-	-	-	-	-
3	Unknown	L	T+E	B	3871	4	0.4	-	-	L	-	L	L	-	-
L1		L	1.5	1	5	5		-	-	-	299	299	L	-	-
3	Unknown	L	T+E	B	3871	4	0.4	-	-	L	-	L	L	-	-
L2		L	1.5	1	5	5		-	-	-	299	299	L	-	-
3	Lights - level 4	5	T+E	B	3871	4	0.4	-	-	0.58	-	L	L	-	-
L3		P	1.5	1	5	5		-	-	-	299	299	0.77	-	-
4	Fluorescents - Shop	4	T+E	B	3871	4	0.4	-	-	0.44	-	L	L	-	-
L1		P	2.5	1.5	5	5		-	-	-	299	299	0.63	-	-
4	Spare MCB	-	-	-	3871	4	-	-	-	-	-	-	L	-	-
L2		-	-	-	5	5		-	-	-	-	-	-	-	-
4	Spare MCB	-	-	-	3871	4	-	-	-	-	-	-	L	-	-
L3		-	-	-	5	5		-	-	-	-	-	-	-	-

Tested By	Test Date	Instrument Type	Serial No	Instrument Type	Serial No
[REDACTED]	10/04/2013	Megger	SHC/IT15		

Equipment Report

Section 6 [23]

Occupier **CAIRNGORM MOUNTAIN LTD**
 Installation Address **Cairngorm Ski Area, Aviemore**
 Specific Location **Not Applicable**



Circuit Schedule and Test Results

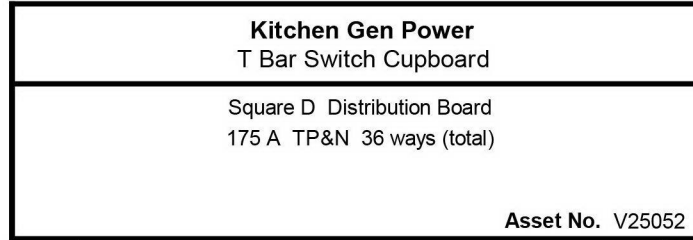
CIRCUIT			Cable		Overcurrent Device		Dis Time	Continuity Test			Insulation Test		Earth Loop	R.C.D. Test	
No	Designation	Points Served	Wiring Phase	Method CPC	BS No Rating	Type Rating	s	r1 rn	r2	R1+R2 R2	L/L L/E	L/N N/E	Max Z s Zs	R.C.D. Rating	x1 x5
Ø		Polarity	mm ²	mm ²	A	kA		Ω	Ω	Ω	MΩ	MΩ	Ω	mA	ms
1	Kitchen Gen Power - V25052	1	S	C	L	L	L	-	-	0.01	299	299	L	-	-
L123		P	25	10	L	L		-		-	299	299	0.02		

Tested By	Test Date	Instrument Type	Serial No	Instrument Type	Serial No
R MacDonald	10/04/2013	Megger	SHC/IT15		

Occupier **CAIRNGORM MOUNTAIN LTD**
 Installation Address **Cairngorm Ski Area, Aviemore**
 Specific Location **Not Applicable**

Supply Cables

Length 1 metre
 PVC Singles 25 mm²



Earthing Arrangements

PFC 20.8 kA
 Earth Loop 0.02 Ohms
 PVC Singles, 10 mm²

Supplied From Kitchen Servery Main Switch
 Secondary Supply None

Circuit Schedule and Test Results

CIRCUIT		Cable			Overcurrent Device		Dis Time	Continuity Test			Insulation Test		Earth Loop	R.C.D. Test	
No	Designation	Points Served	Wiring Phase	Method CPC	BS No Rating A	Type Rating kA	s	r1 rn Ω	r2 Ω	R1+R2 R2 Ω	L/L L/E MΩ	L/N N/E MΩ	Max Z s Zs Ω	R.C.D. Rating mA	x1 x5 ms
1	Spare MCB	-	-	-	3871	3	-	-	-	-	-	-	1.15	-	-
L1		-	-	-	16	9		-	-	-	-	-	-	-	-
1	Spare MCB	-	-	-	3871	3	-	-	-	-	-	-	1.15	-	-
L2		-	-	-	16	9		-	-	-	-	-	-	-	-
1	Hand Dryer 2 - Staff	1	T+E	B	3871	3	0.4	-	-	0.28	-	L	1.15	-	-
L3		P	2.5	1.5	16	9		-	-	-	299	299	0.30	-	-
2	Hand Dryer 1 - Staff	1	T+E	B	3871	3	0.4	-	-	0.26	-	L	1.15	-	-
L1		P	2.5	1.5	16	9		-	-	-	299	299	0.28	-	-
2	Spare MCB	-	-	-	3871	3	-	-	-	-	-	-	0.57	-	-
L2		-	-	-	32	9		-	-	-	-	-	-	-	-
2	Spare MCB	-	-	-	3871	3	-	-	-	-	-	-	0.92	-	-
L3		-	-	-	20	9		-	-	-	-	-	-	-	-
3	Spare MCB	-	-	-	3871	3	-	-	-	-	-	-	1.15	-	-
L1		-	-	-	16	9		-	-	-	-	-	-	-	-
3	Spare MCB	-	-	-	3871	3	-	-	-	-	-	-	0.92	-	-
L2		-	-	-	20	9		-	-	-	-	-	-	-	-
3	Spare MCB	-	-	-	3871	3	-	-	-	-	-	-	0.57	-	-
L3		-	-	-	32	9		-	-	-	-	-	-	-	-
4	Spare MCB	-	-	-	3871	3	-	-	-	-	-	-	0.40	-	-
L1		-	-	-	45	9		-	-	-	-	-	-	-	-
4	Pass Through Hot Cupboard	1	T+E	B	3871	3	0.4	-	-	0.25	-	L	1.15	-	-
L2		P	2.5	1.5	16	9		-	-	-	299	299	0.27	-	-
4	Shower - Level 3	1	T+E	B	61009	B	5	-	-	0.14	-	L	1666	30	28.4
L3		P	10	4	40	10		-	-	-	299	299	0.16	-	10.2
5	Shower - Level 3	1	T+E	B	61009	B	5	-	-	0.17	-	L	1666	30	26.2
L1		P	10	4	40	10		-	-	-	299	299	0.19	-	12.4
5	Ring - Kitchen	8	T+E	B	3871	3	0.4	0.49	L	0.19	-	L	0.57	-	-
L2		P	2X2.5	2X1.5	32	9		L	-	-	299	299	0.21	-	-

Occupier **CAIRNGORM MOUNTAIN LTD**
 Installation Address **Cairngorm Ski Area, Aviemore**
 Specific Location **Not Applicable**

Circuit Schedule and Test Results

CIRCUIT			Cable		Overcurrent Device		Dis Time	Continuity Test			Insulation Test		Earth Loop	R.C.D. Test	
No	Designation	Points Served	Wiring Phase	Method CPC	BS No Rating	Type Rating	s	r1 rn	r2	R1+R2 R2	L/L L/E	L/N N/E	Max Z s Zs	R.C.D. Rating	x1 x5
Ø		Polarity	mm ²	mm ²	A	kA		Ω	Ω	Ω	MΩ	MΩ	Ω	mA	ms
5 L3	Ring - Servery	6 P	T+E 2X2.5	B 2X1.5	3871 32	3 9	0.4	0.56 L	L	0.22 -	- 299	L 299	0.57 0.24	-	-
6 L123	Dish Washer	1 P	S 10	C 6	3871 45	3 9	5	- -	-	0.07 -	299 299	299 299	0.40 0.09	-	-
7 L1	Spare MCB	- -	- -	- -	3871 20	3 9	-	- -	-	- -	- -	- -	0.92 -	-	-
7 L2	Spare MCB	- -	- -	- -	3871 16	3 9	-	- -	-	- -	- -	- -	1.15 -	-	-
7 L3	Spare MCB	- -	- -	- -	3871 16	3 9	-	- -	-	- -	- -	- -	1.15 -	-	-
8 L1	Spare MCB	- -	- -	- -	3871 16	3 9	-	- -	-	- -	- -	- -	1.15 -	-	-
8 L2	Spare MCB	- -	- -	- -	3871 45	3 9	-	- -	-	- -	- -	- -	0.40 -	-	-
8 L3	Spare MCB	- -	- -	- -	3871 16	3 9	-	- -	-	- -	- -	- -	1.15 -	-	-
9 L123	Food Mixer - Kitchen	1 P	SWA 1.5	3 1.5	3871 6	3 9	0.4	- -	-	0.34 -	299 299	299 299	3.06 0.62	-	-
10 L1	Spare MCB	- -	- -	- -	3871 56	3 9	-	- -	-	- -	- -	- -	0.40 0.36	-	-
10 L2	Mixing Bowl	1 P	T+E 2.5	B 1.5	3871 16	3 9	0.4	- -	-	0.27 -	- 299	299 299	1.15 0.29	-	-
10 L3	Spare MCB	- -	- -	- -	3871 32	3 9	-	- -	-	- -	- -	- -	0.57 -	-	-
11 L1	Freezer	1 P	T+E 2.5	B 1.5	3871 16	3 9	0.4	- -	-	0.20 -	- 299	299 299	1.15 0.22	-	-
11 L2	Glass Washer	1 P	T+E 2.5	B 1.5	3871 16	3 9	0.4	- -	-	0.24 -	- 299	299 299	1.15 0.26	-	-
11 L3	Spare MCB	- -	- -	- -	3871 32	3 9	-	- -	-	- -	- -	- -	0.57 -	-	-
12 L123	Dish Washer	1 P	S 2.5	C 2.5	3871 16	3 9	0.4	- -	-	0.24 -	299 299	299 299	1.15 0.26	-	-

Tested By	Test Date	Instrument Type	Serial No	Instrument Type	Serial No
	10/04/2013	Megger	SHC/IT15		

Report Abbreviations

Occupier **CAIRNGORM MOUNTAIN LTD**
 Installation Address **Cairngorm Ski Area, Aviemore**
 Specific Location **Not Applicable**

Abbreviation	Meaning	Abbreviation	Meaning
ADS	Automatic Disconnection of Supply	BBC	Busbar Chamber
BS3036	Rewirable Fusible Link	BS3871	Miniature Circuit Breaker
BS88/BS1361	General Purpose Cartridge Fuses	BSEN60898	Miniature Circuit Breaker
BSEN60947-2	Moulded Case Circuit Breaker	BSEN61009	Combined MCB/RCD
C/W	Copper Wire	CON	Concentric
CPC	Circuit Protective Conductor	CS	Cable Sheath
DB	Distribution Board	EEBADS	Earthed Equipotential Bonding and Automatic Disconnection of Supply
F	Fail	FELV	Functional extra low voltage
FP200	Fire Retardant Cable	INA	Information Not Available
ISO	Isolator Switch	L or LIM	Limitation of Test
LS	Lead Sheathed Cable	MCB	Miniature Circuit Breaker BS3871, BSEN60898
MCCB	Moulded Case Circuit Breaker	Method	Refer to BS7671 Appendix 4 Table 4A2 for full list of Reference Methods
MF	Metal Conduit/Trunking System Provides main C.P.C.	MI/MICC	Mineral Insulated Copper Conductor Cables
NA	Not Applicable	P	Pass
PELV	Protective extra low voltage	PFC	Prospective Fault Current
PILSWA	Paper Insulated Lead Steel Wire Armour	PVC/PVC	PVC Insulated PVC Sheathed Singles (tails)
RCBO	Residual Current Breaker with Overcurrent Protection	RCCB	Residual Current Circuit Breaker
RCD	Residual Current Device	S	PVC Insulated Single Cable
SELV	Separated extra low voltage	SL	Solid Link
SP+N	Single Pole and Neutral	SPD	Surge Protection Device
SWA	Steel Wire Armoured Cable	SWF	Switched Fuse
T	PVC Insulated Twin Cable	T+E	PVC Insulated Twin and Earth Cable
TP+N	Triple Pole and Neutral	TRS	Tough Rubber Sheathed Cable
U	Unknown	V/VIR	Vulcanised Indian Rubber Insulated Cable (singles)
VOCB	Voltage Operated Circuit Breaker		